

THE

REGENCY

PLAN #
2240
2241



PLAN 2241 / ELEVATION "A"

FLOOR PLANS OTHER SIDE

Timber Truss Housing Systems, Inc. has caused this TrussMark plan to be copyrighted by the United States Copyright Office, Library of Congress, Washington, D.C. Unauthorized use of copyrighted TrussMark plans, without the permission of Timber Truss Housing Systems, Inc., can lead to an award of damages, reimbursement of attorney's fees and costs, and the seizure or destruction of all infringements under Title 17, United States Code. Copyright law protection extends beyond exact duplication. An unauthorized use which is substantially similar to the plan is copyright infringement.

DUPLICATION OF EVERY DETAIL OR EXACT COPYING IS NOT NECESSARY TO ESTABLISH INFRINGEMENT OF THE COPYRIGHT. MAKING MINOR CHANGES IN THE HOUSE PLAN IS NOT AN AUTHORIZED USE UNDER THE COPYRIGHT LAW. INFRINGEMENT OF COPYRIGHT CAN EXIST EVEN WHERE ONLY A PART IS COPIED.

**TrussMark Homes**
by TIMBER TRUSS HOUSING SYSTEMS, INC.

P.O. Box 996
Salem, Virginia 24153-0996

Phone **540/387-0273**

800/766-9072

Fax **540/389-0849**

www.timbertruss.com

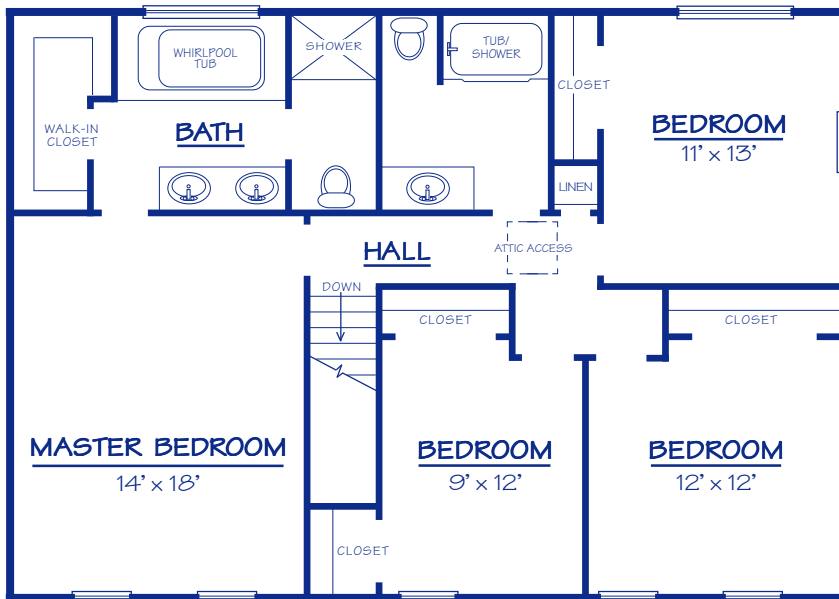
Located at: **525 McClelland Street**
(at 4th Street Bypass/Truck Route)

WIDTH: 66'-0" DEPTH: 28'-0" LIVING AREA: 2,240 sq. ft.

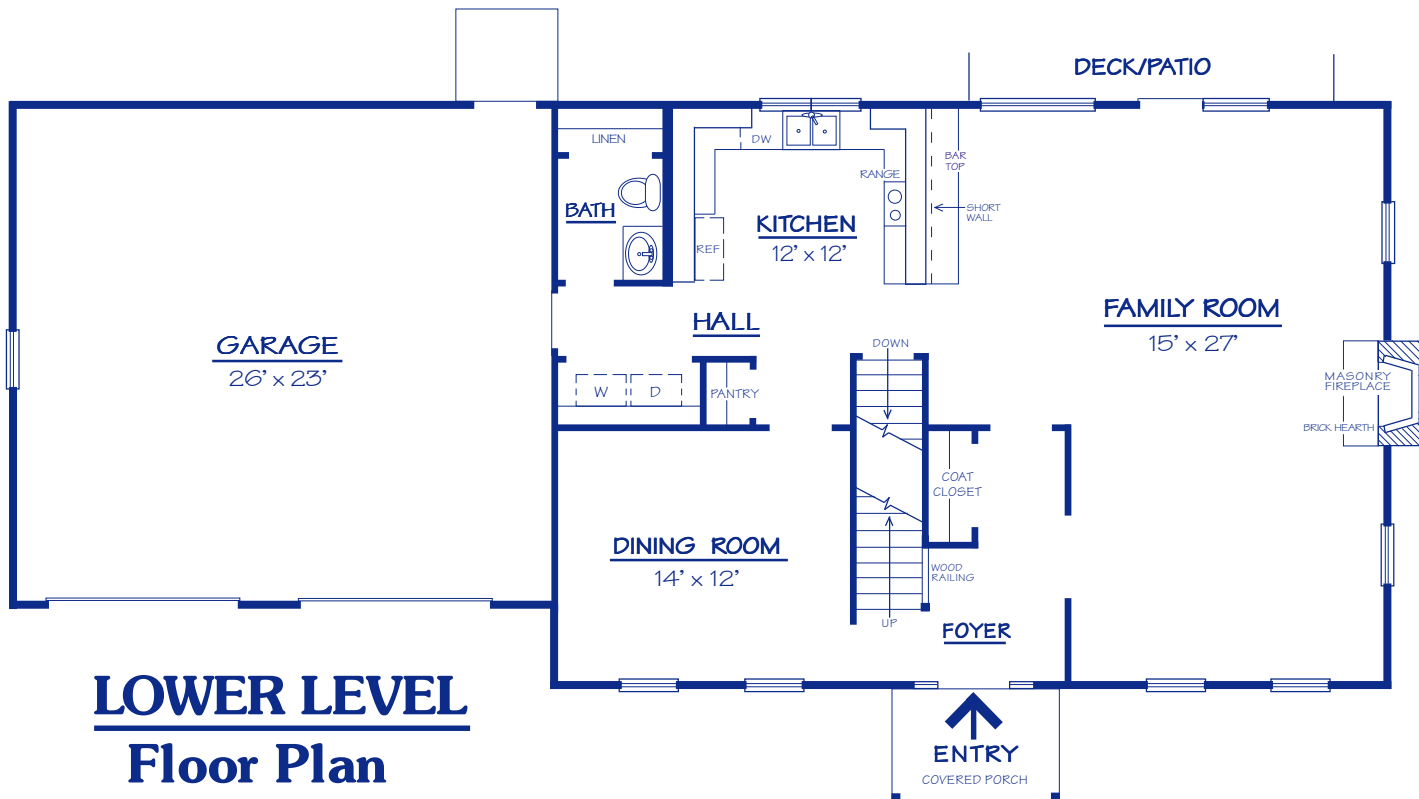
Plan# **2240** (FRAME)
2241 (BRICK)

The "Regency", Plan# 2240, is an elegant 4-bedroom, 2-story home. It features a large, bright Family Room with a masonry fireplace, bar area to Kitchen, and patio door leading to the patio/deck. A convenient Kitchen has a pantry and accesses the formal Dining Room. A laundry closet, Bath, and 2-Car Garage complete the first floor. The upstairs features a Master Bedroom which has a large bath/dressing area with whirlpool and shower. There are three more Bedrooms and a full bath. This plan is available as a frame or brick elevation.

UPPER LEVEL Floor Plan



LOWER LEVEL Floor Plan



PROPRIETARY INFORMATION:

The furnishing of this information does not convey any reproduction or construction rights.

This brochure is provided as general information for choosing your new home. Refer to blueprints and specifications for accurate details. Timber Truss Housing Systems, Inc. reserves the right to introduce changes in plans and specifications without notification or obligation.

©Timber Truss Housing Systems, Inc.

TrussMark Homes
by **TIMBER TRUSS HOUSING SYSTEMS, INC.**
P.O. Box 996 • 525 McClelland Street
Salem, Virginia 24153-0996
Phone **540/387-0273** • Fax **540/389-0849**
www.timbertruss.com