

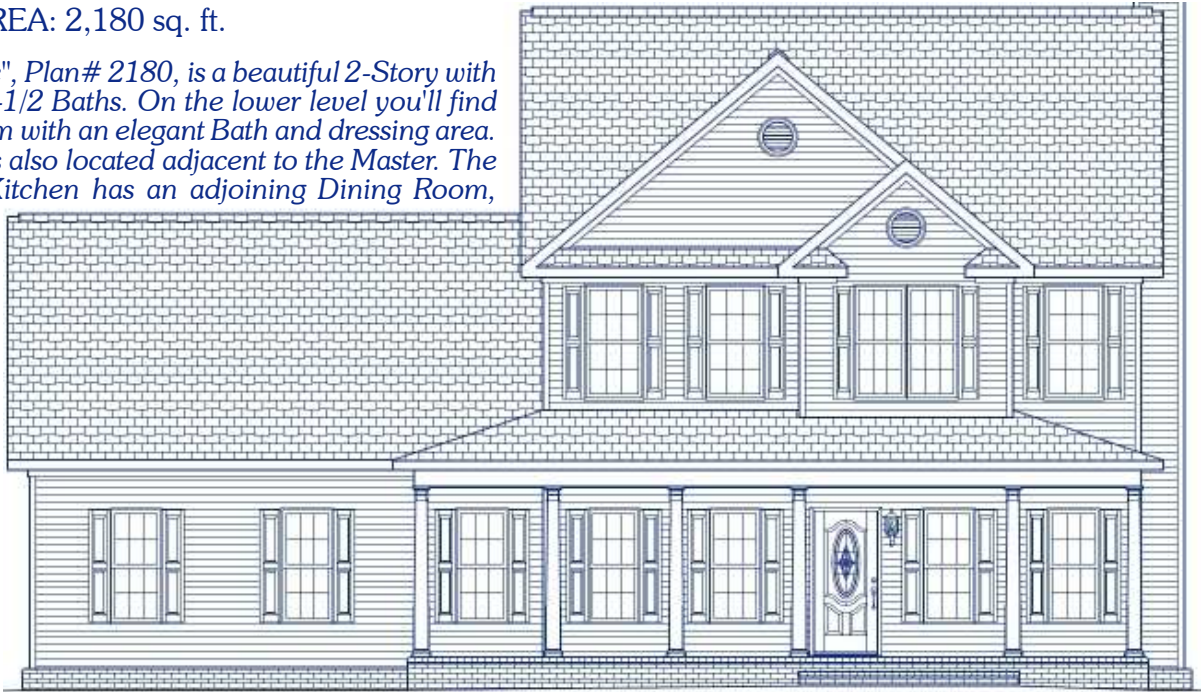
NEWEST TRUSSMARKS

THE INDEPENDENCE

PLAN #
2180

WIDTH: 54'-0" DEPTH: 52'-0"
LIVING AREA: 2,180 sq. ft.

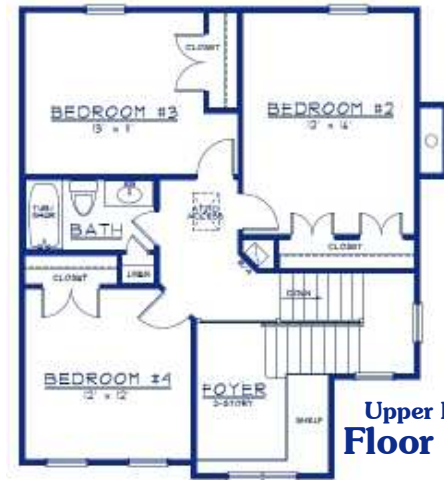
The "Independence", Plan# 2180, is a beautiful 2-Story with 4 Bedrooms and 2-1/2 Baths. On the lower level you'll find the Master Bedroom with an elegant Bath and dressing area. A Laundry Room is also located adjacent to the Master. The centrally located Kitchen has an adjoining Dining Room, Nook area, and Family Room with fireplace. Upstairs you'll found 3 Bedrooms and a full Bath. The Covered Porch, 2-Car Garage, and dramatic Foyer complete this very desirable plan.



PLAN 2180 / ELEVATION "A"



Lower Level Floor Plan



Upper Level Floor Plan

PROPRIETARY INFORMATION:

The furnishing of this information does not convey any reproduction or construction rights. This brochure is provided as general information for choosing your new home. Refer to blueprints and specifications for accurate details. Timber Truss Housing Systems, Inc. reserves the right to introduce changes in plans and specifications without notification or obligation.

Timber Truss Housing Systems, Inc.

3-09

TrussMark Homes[®]
by **TIMBER TRUSS HOUSING SYSTEMS, INC.**
P.O. Box 996 • 525 McClelland Street
Salem, Virginia 24153-0996
Phone **540/387-0273** • **800/766-9072**
Fax **540/389-0849** www.timbertruss.com