

# THE COUNTRYSIDE

PLAN #  
**2168**



**PLAN 2168 / ELEVATION "A"**



**PLAN 2168 / ELEVATION "B"**

*FLOOR PLANS OTHER SIDE*

Timber Truss Housing Systems, Inc. has caused this TrussMark plan to be copyrighted by the United States Copyright Office, Library of Congress, Washington, D.C. Unauthorized use of copyrighted TrussMark plans, without the permission of Timber Truss Housing Systems, Inc., can lead to an award of damages, reimbursement of attorney's fees and costs, and the seizure or destruction of all infringements under Title 17, United States Code. Copyright law protection extends beyond exact duplication. An unauthorized use which is substantially similar to the plan is copyright infringement.

**DUPLICATION OF EVERY DETAIL OR EXACT COPYING IS NOT NECESSARY TO ESTABLISH INFRINGEMENT OF THE COPYRIGHT. MAKING MINOR CHANGES IN THE HOUSE PLAN IS NOT AN AUTHORIZED USE UNDER THE COPYRIGHT LAW. INFRINGEMENT OF COPYRIGHT CAN EXIST EVEN WHERE ONLY A PART IS COPIED.**

**TrussMark** Homes<sup>®</sup>  
by **TIMBER TRUSS HOUSING SYSTEMS, INC.**

P.O. Box 996  
Salem, Virginia 24153-0996

Phone **540/387-0273**

Fax **540/389-0849**

[www.timbertruss.com](http://www.timbertruss.com)

*Located at: 525 McClelland Street  
(at 4th Street Bypass/Truck Route)*

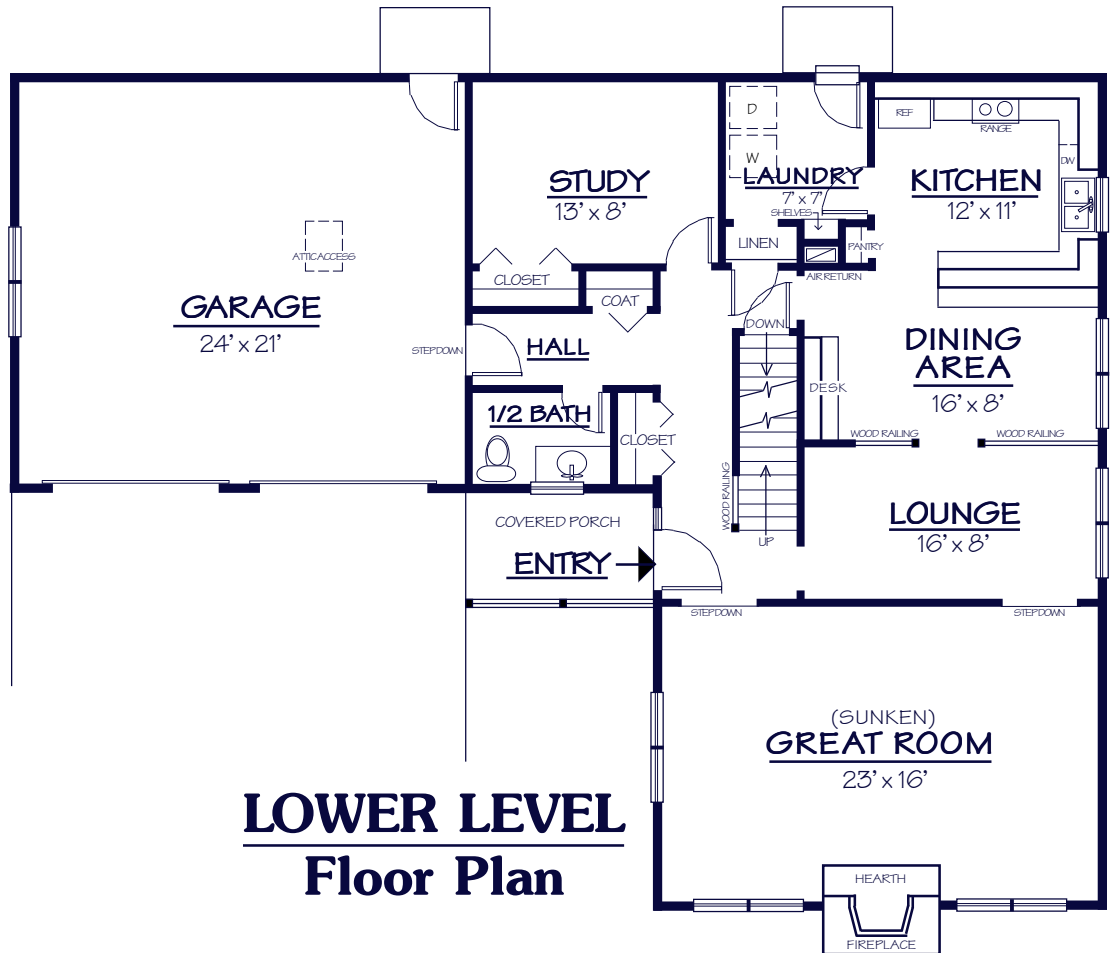
WIDTH: 58'-0" DEPTH: 44'-0" LIVING AREA: 2,168 sq. ft.

Plan# **2168**

Rarely does a floor plan match as equally well with a traditional elevation as a contemporary elevation. However, with the Countryside, Plan# 2168, either elevation works equally as well. The openness of the Kitchen, Dining area, and Lounge creates a touch of informality to this home, much desired by today's families. The bar, desk, pantry and laundry room enhance this very functional plan. The Great Room adds the flair of a sunken floor and vaulted ceiling along with a beautiful fireplace. Another nice touch is the cozy dressing area off the Master Bedroom. The contemporary version has openings that look directly into the Great Room from the Master Bedroom. This home also offers the flexibility of a fourth Bedroom, study, library, or sewing/craft room on the lower level. All these features make the Countryside one of the true classics developed at Timber Truss.



**UPPER LEVEL**  
**Floor Plan**



**LOWER LEVEL**  
**Floor Plan**

**PROPRIETARY INFORMATION:**

The furnishing of this information does not convey any reproduction or construction rights.

This brochure is provided as general information for choosing your new home. Refer to blueprints and specifications for accurate details. Timber Truss Housing Systems, Inc. reserves the right to introduce changes in plans and specifications without notification or obligation.

©Timber Truss Housing Systems, Inc.

**TrussMark** Homes<sup>®</sup>  
by **TIMBER TRUSS HOUSING SYSTEMS, INC.**  
P.O. Box 996  
Salem, Virginia 24153-0996  
Phone **540/387-0273** • Fax **540/389-0849**  
[www.timbertruss.com](http://www.timbertruss.com)