

NEWEST TRUSSMARKS

THE DAYTON

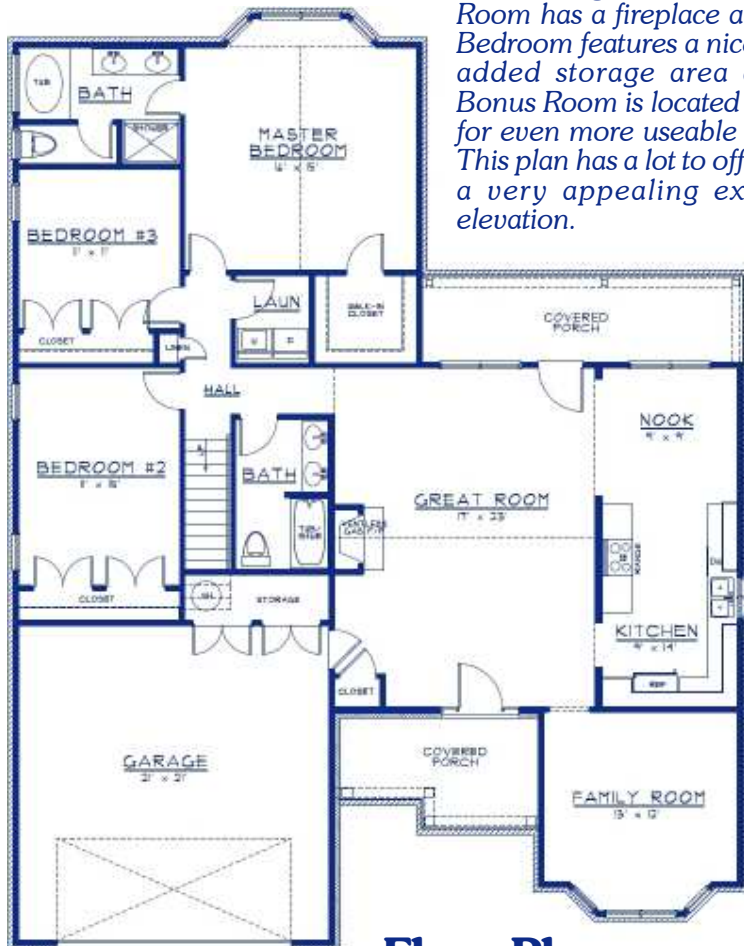
PLAN #
2140

WIDTH: 50'-0" DEPTH: 64'-0" LIVING AREA: 2,132 sq. ft.- (includes 280 sq. ft. Bonus Room)

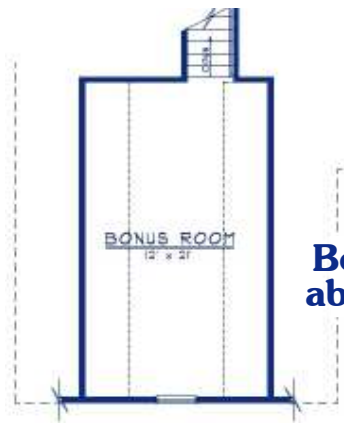


PLAN 2140 / ELEVATION "A"

The "Dayton", Plan# 2140, is a spacious 3 Bedroom, 2 Bath ranch with 2-car Garage, Covered Porches front and rear, and much more. The Great Room has a fireplace and leads to the Kitchen and Nook area. The Master Bedroom features a nice private bath and walk-in closet. The Garage has an added storage area and a Bonus Room is located above for even more useable space. This plan has a lot to offer and a very appealing exterior elevation.



Floor Plan



**Bonus Room
above Garage**

PROPRIETARY INFORMATION: The furnishing of this information does not convey any reproduction or construction rights. This brochure is provided as general information for choosing your new home. Refer to blueprints and specifications for accurate details. Timber Truss Housing Systems, Inc. reserves the right to introduce changes in plans and specifications without notification or obligation. Timber Truss Housing Systems, Inc.

3-09

TrussMark Homes
by TIMBER TRUSS HOUSING SYSTEMS, INC.
P.O. Box 996 • 525 McClelland Street
Salem, Virginia 24153-0996
Phone 540/387-0273 • 800/766-9072
Fax 540/389-0849 www.timbertruss.com