

**THE**

# GRENADA

PLAN #  
**2105**



**PLAN 2105 /ELEVATION "A"**

*FLOOR PLANS OTHER SIDE*

Timber Truss Housing Systems, Inc. has caused this TrussMark plan to be copyrighted by the United States Copyright Office, Library of Congress, Washington, D.C. Unauthorized use of copyrighted TrussMark plans, without the permission of Timber Truss Housing Systems, Inc., can lead to an award of damages, reimbursement of attorney's fees and costs, and the seizure or destruction of all infringements under Title 17, United States Code. Copyright law protection extends beyond exact duplication. An unauthorized use which is substantially similar to the plan is copyright infringement.

**DUPLICATION OF EVERY DETAIL OR EXACT COPYING IS NOT NECESSARY TO ESTABLISH INFRINGEMENT OF THE COPYRIGHT. MAKING MINOR CHANGES IN THE HOUSE PLAN IS NOT AN AUTHORIZED USE UNDER THE COPYRIGHT LAW. INFRINGEMENT OF COPYRIGHT CAN EXIST EVEN WHERE ONLY A PART IS COPIED.**

**TrussMark** Homes<sup>®</sup>  
by **TIMBER TRUSS HOUSING SYSTEMS, INC.**

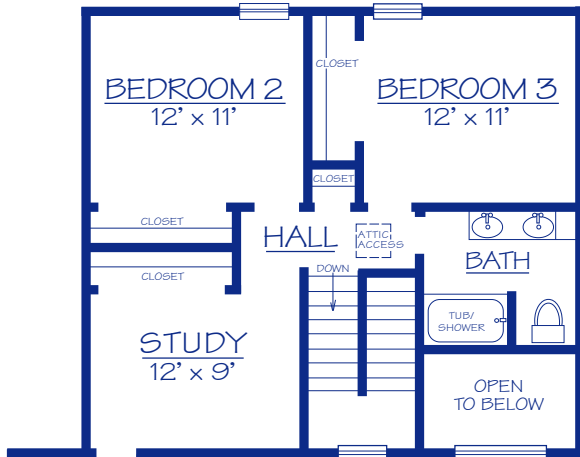
P.O. Box 996  
Salem, Virginia 24153-0996  
Phone **540/387-0273**  
**800/766-9072**  
Fax **540/389-0849**  
[www.timbertruss.com](http://www.timbertruss.com)

*Located at: 525 McClelland Street  
(at 4th Street Bypass/Truck Route)*

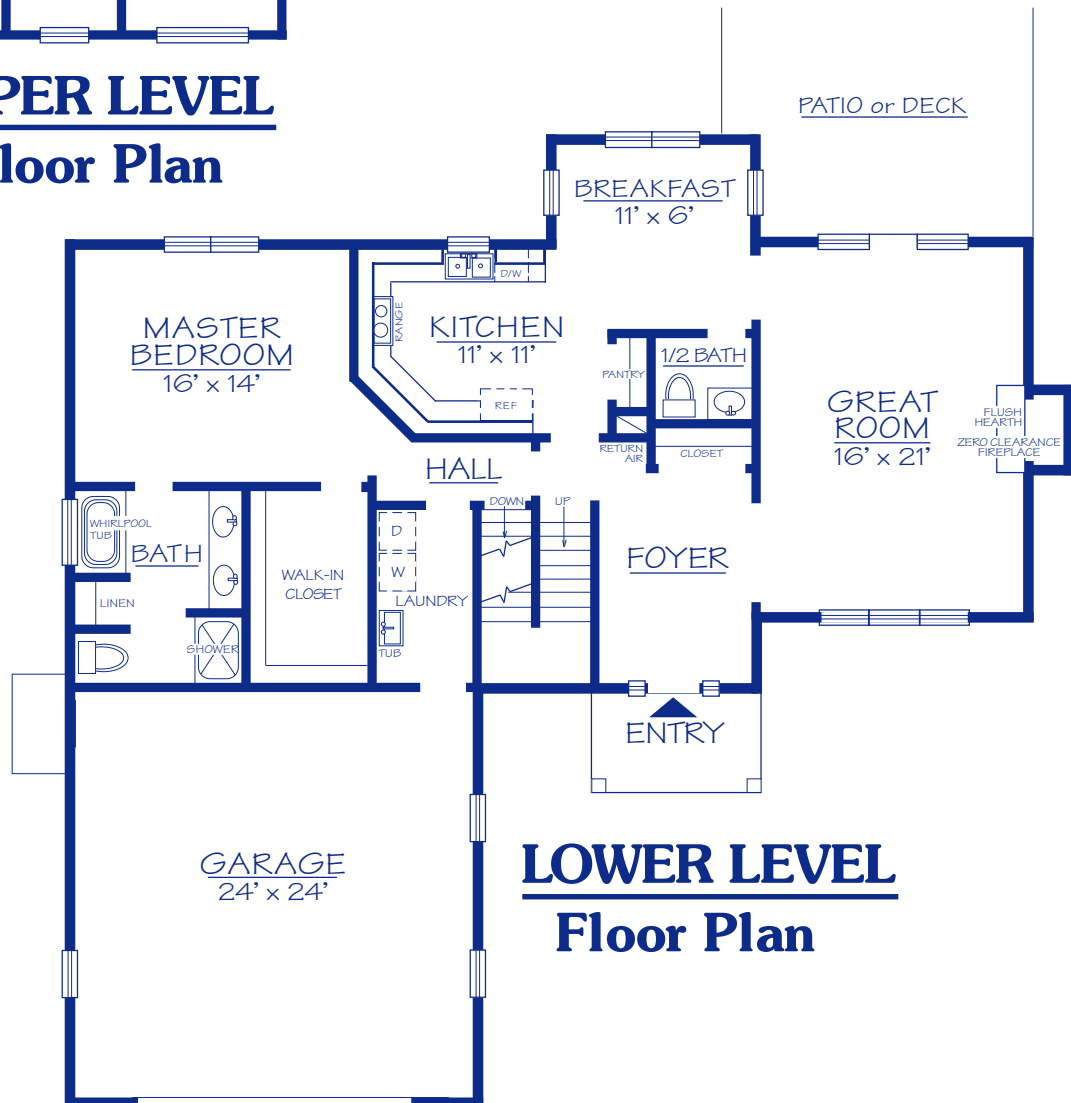
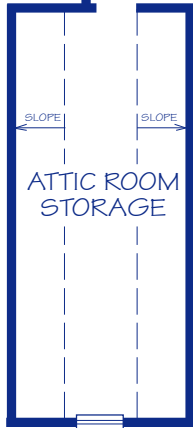
WIDTH: 56'-0" DEPTH: 50'-0" LIVING AREA: 2,105 sq.ft.

Plan# **2105**

The "Grenada", Plan# 2105, is a roomy, three bedroom, two-story plan. It features a desirable lower level Master Bedroom with large private bath and walk-in closet. The Foyer opens to a large Great Room with fireplace and the Kitchen with a bright breakfast nook. A half-bath is conveniently located to these public areas. From the 2-car garage, you enter through a handy laundry area to the hall. The upper level has two Bedrooms, a Study, Bath, and the bonus of an attic room storage area. These features, along with the exterior details make this plan a very fine home.



**UPPER LEVEL  
Floor Plan**



**LOWER LEVEL  
Floor Plan**

**PROPRIETARY INFORMATION:**

The furnishing of this information does not convey any reproduction or construction rights.

This brochure is provided as general information for choosing your new home. Refer to blueprints and specifications for accurate details. Timber Truss Housing Systems, Inc. reserves the right to introduce changes in plans and specifications without notification or obligation.

©Timber Truss Housing Systems, Inc.

**TrussMark Homes**  
 by **TIMBER TRUSS HOUSING SYSTEMS, INC.**  
 P.O. Box 996 • 525 McClelland Street  
 Salem, Virginia 24153-0996  
 Phone **540/387-0273** • Fax **540/389-0849**  
[www.timbertruss.com](http://www.timbertruss.com)