

THE SMITHFIELD

PLAN #
2086
2087



PLAN 2087 / ELEVATION "A"

FLOOR PLANS OTHER SIDE

Timber Truss Housing Systems, Inc. has caused this TrussMark plan to be copyrighted by the United States Copyright Office, Library of Congress, Washington, D.C. Unauthorized use of copyrighted TrussMark plans, without the permission of Timber Truss Housing Systems, Inc., can lead to an award of damages, reimbursement of attorney's fees and costs, and the seizure or destruction of all infringements under Title 17, United States Code. Copyright law protection extends beyond exact duplication. An unauthorized use which is substantially similar to the plan is copyright infringement.

DUPLICATION OF EVERY DETAIL OR EXACT COPYING IS NOT NECESSARY TO ESTABLISH INFRINGEMENT OF THE COPYRIGHT. MAKING MINOR CHANGES IN THE HOUSE PLAN IS NOT AN AUTHORIZED USE UNDER THE COPYRIGHT LAW. INFRINGEMENT OF COPYRIGHT CAN EXIST EVEN WHERE ONLY A PART IS COPIED.

TrussMark Homes[®]
by **TIMBER TRUSS HOUSING SYSTEMS, INC.**

P.O. Box 996
Salem, Virginia 24153-0996
Phone **540/387-0273**
800/766-9072
Fax **540/389-0849**
www.timbertruss.com

Located at: **525 McClelland Street**
(at 4th Street Bypass/Truck Route)

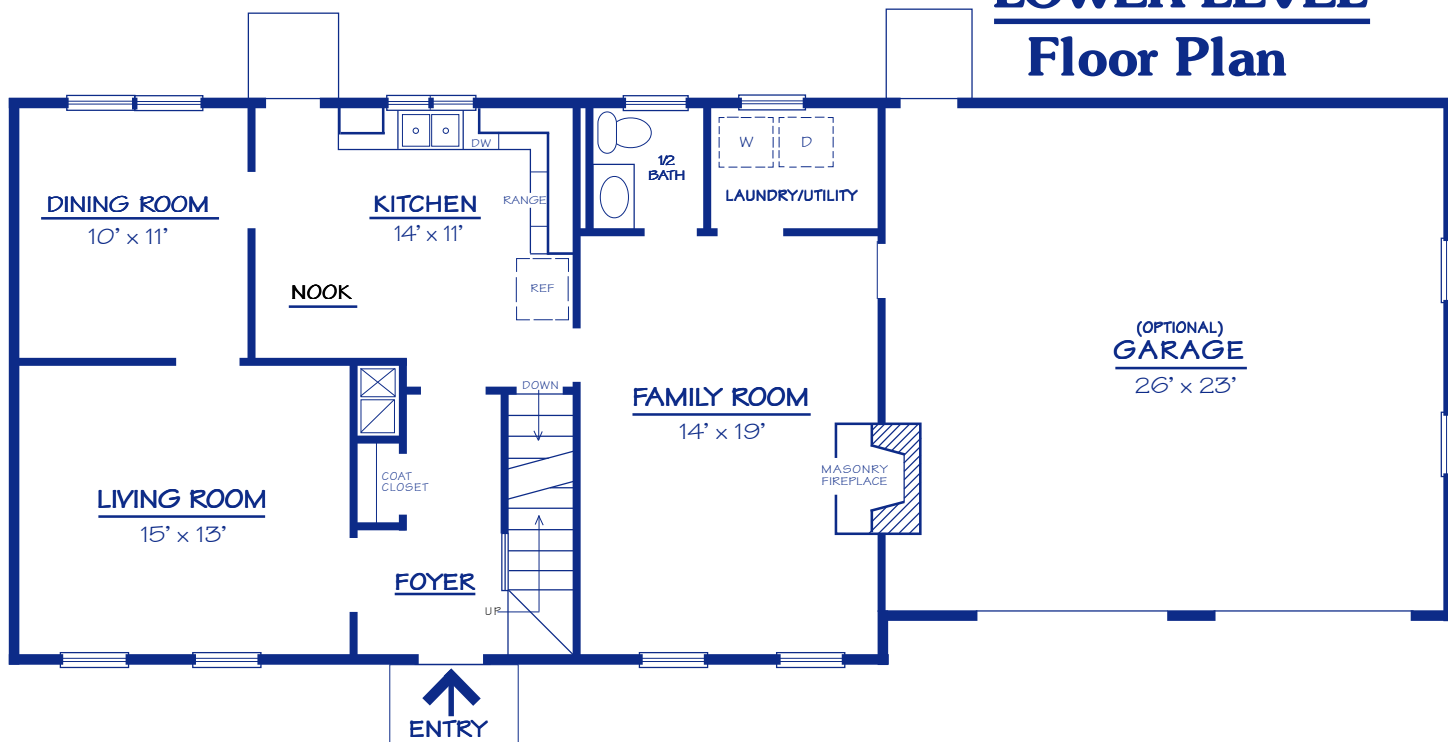
WIDTH: 40'-0" DEPTH: 26'-0" LIVING AREA: 2,080 sq. ft.

Plan# **2086** (FRAME)
2087 (BRICK)

The "Smithfield", Plan# 2086, is a roomy, four bedroom two-story plan. It has been very popular and well received over the years. A good and balanced use of space is found everywhere in the home including the large closets. The washer/dryer can be located on the first or second level. This plan can easily be built as frame or brick and with or without a basement. A garage is another option for this plan, which works very well either way. The Master Suite has a dressing area which also adds to the luxury of the "Smithfield".



UPPER LEVEL Floor Plan



LOWER LEVEL Floor Plan

PROPRIETARY INFORMATION:

The furnishing of this information does not convey any reproduction or construction rights.

This brochure is provided as general information for choosing your new home. Refer to blueprints and specifications for accurate details. Timber Truss Housing Systems, Inc. reserves the right to introduce changes in plans and specifications without notification or obligation.

©Timber Truss Housing Systems, Inc.

TrussMark Homes
by **TIMBER TRUSS HOUSING SYSTEMS, INC.**
P.O. Box 996 • 525 McClelland Street
Salem, Virginia 24153-0996
Phone **540/387-0273** • Fax **540/389-0849**
www.timbertruss.com