

THE BROOKFIELD

PLAN #
2016
(DUPLEX PLAN)



PLAN 2016 / ELEVATION "A"

FLOOR PLANS OTHER SIDE

Timber Truss Housing Systems, Inc. has caused this TrussMark plan to be copyrighted by the United States Copyright Office, Library of Congress, Washington, D.C. Unauthorized use of copyrighted TrussMark plans, without the permission of Timber Truss Housing Systems, Inc., can lead to an award of damages, reimbursement of attorney's fees and costs, and the seizure or destruction of all infringements under Title 17, United States Code. Copyright law protection extends beyond exact duplication. An unauthorized use which is substantially similar to the plan is copyright infringement.

DUPLICATION OF EVERY DETAIL OR EXACT COPYING IS NOT NECESSARY TO ESTABLISH INFRINGEMENT OF THE COPYRIGHT. MAKING MINOR CHANGES IN THE HOUSE PLAN IS NOT AN AUTHORIZED USE UNDER THE COPYRIGHT LAW. INFRINGEMENT OF COPYRIGHT CAN EXIST EVEN WHERE ONLY A PART IS COPIED.

TrussMark Homes[®]
by **TIMBER TRUSS HOUSING SYSTEMS, INC.**

P.O. Box 996
Salem, Virginia 24153-0996
Phone **540/387-0273**
800/766-9072
Fax **540/389-0849**
www.timbertruss.com

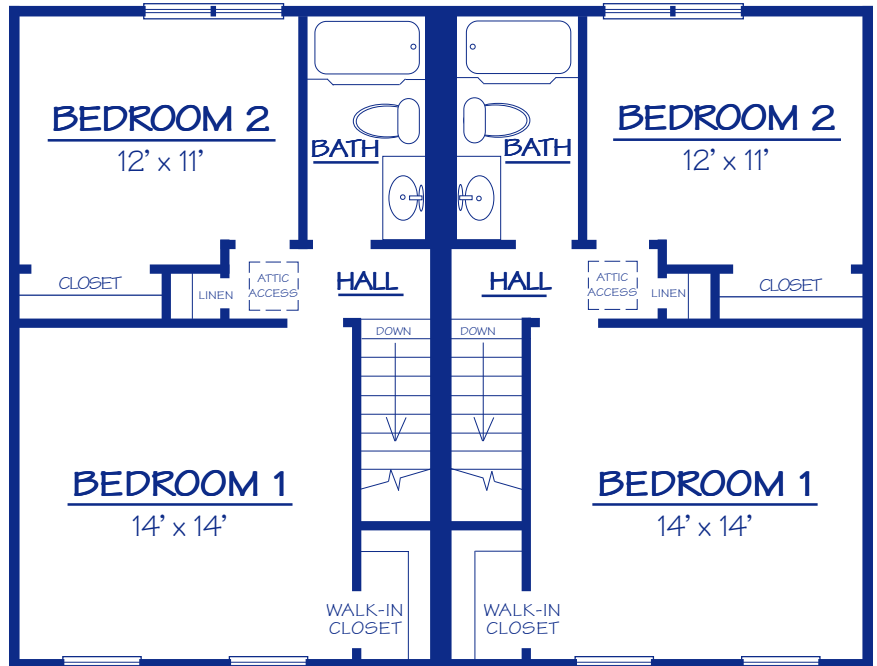
Located at: **525 McClelland Street**
(at 4th Street Bypass/Truck Route)

WIDTH: 36'-0" DEPTH: 28'-0" LIVING AREA: 2,016 sq.ft. (TOTAL)

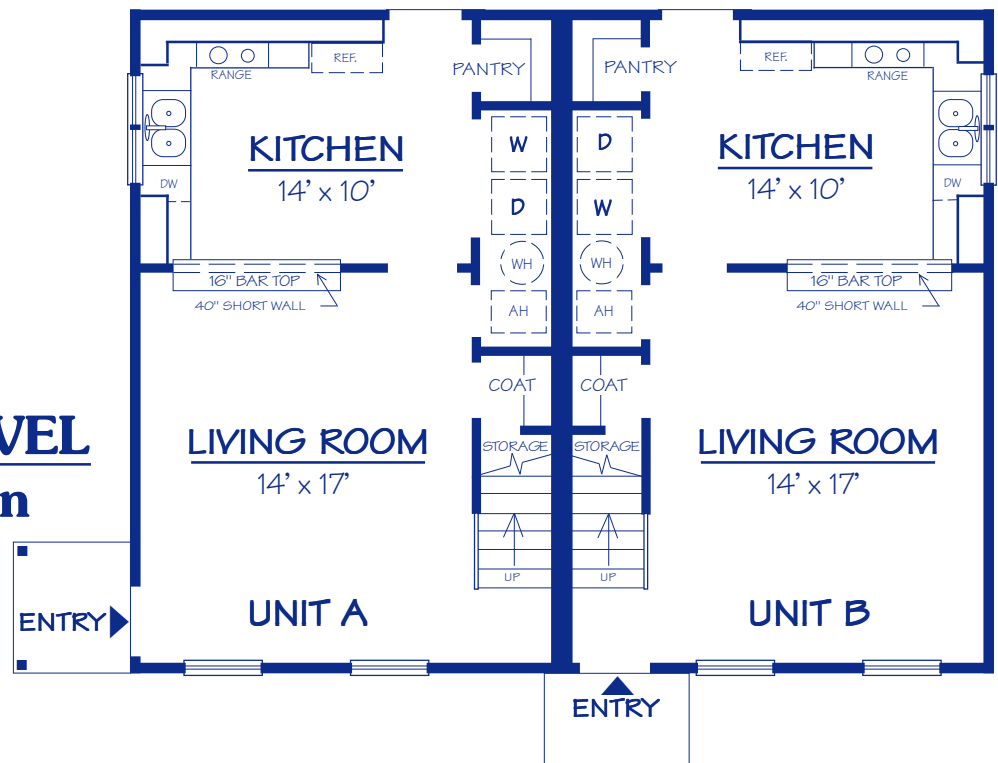
Plan# **2016**

The "Brookfield" has proven to be a most popular plan for a Duplex. The features and efficient use of space have set a standard for this type of housing unit. Each Kitchen has: a large eating area, a bar into the living room, handy pantry, and utility closet for washer and dryer hookups and utility space. The large Living Room has stairs leading up to the Master Bedroom with walk-in closet, spacious second Bedroom, and Bath. The "Brookfield" has very pleasing elevations that make it a nice addition to any neighborhood.

UPPER LEVEL Floor Plan



LOWER LEVEL Floor Plan



Options for this plan:

- At Unit B: Bay/Twin Windows for front (Elevation "A") or Single Windows (Elevation "B").
- Frame/siding elevation or brick elevation.

PROPRIETARY INFORMATION:

The furnishing of this information does not convey any reproduction or construction rights.

This brochure is provided as general information for choosing your new home. Refer to blueprints and specifications for accurate details. Timber Truss Housing Systems, Inc. reserves the right to introduce changes in plans and specifications without notification or obligation.

©Timber Truss Housing Systems, Inc.

TrussMark Homes[®]
 by **TIMBER TRUSS HOUSING SYSTEMS, INC.**
 P.O. Box 996
 Salem, Virginia 24153-0996
 Phone **540/387-0273** • Fax **540/389-0849**
www.timbertruss.com