

THE MONTGOMERY

PLAN #
1906



PLAN 1906 / ELEVATION "A"

FLOOR PLANS OTHER SIDE

Timber Truss Housing Systems, Inc. has caused this TrussMark plan to be copyrighted by the United States Copyright Office, Library of Congress, Washington, D.C. Unauthorized use of copyrighted TrussMark plans, without the permission of Timber Truss Housing Systems, Inc., can lead to an award of damages, reimbursement of attorney's fees and costs, and the seizure or destruction of all infringements under Title 17, United States Code. Copyright law protection extends beyond exact duplication. An unauthorized use which is substantially similar to the plan is copyright infringement.

DUPLICATION OF EVERY DETAIL OR EXACT COPYING IS NOT NECESSARY TO ESTABLISH INFRINGEMENT OF THE COPYRIGHT. MAKING MINOR CHANGES IN THE HOUSE PLAN IS NOT AN AUTHORIZED USE UNDER THE COPYRIGHT LAW. INFRINGEMENT OF COPYRIGHT CAN EXIST EVEN WHERE ONLY A PART IS COPIED.

**TrussMark Homes**
by TIMBER TRUSS HOUSING SYSTEMS, INC.

P.O. Box 996
Salem, Virginia 24153-0996

Phone **540/387-0273**

800/766-9072

Fax **540/389-0849**

www.timbertruss.com

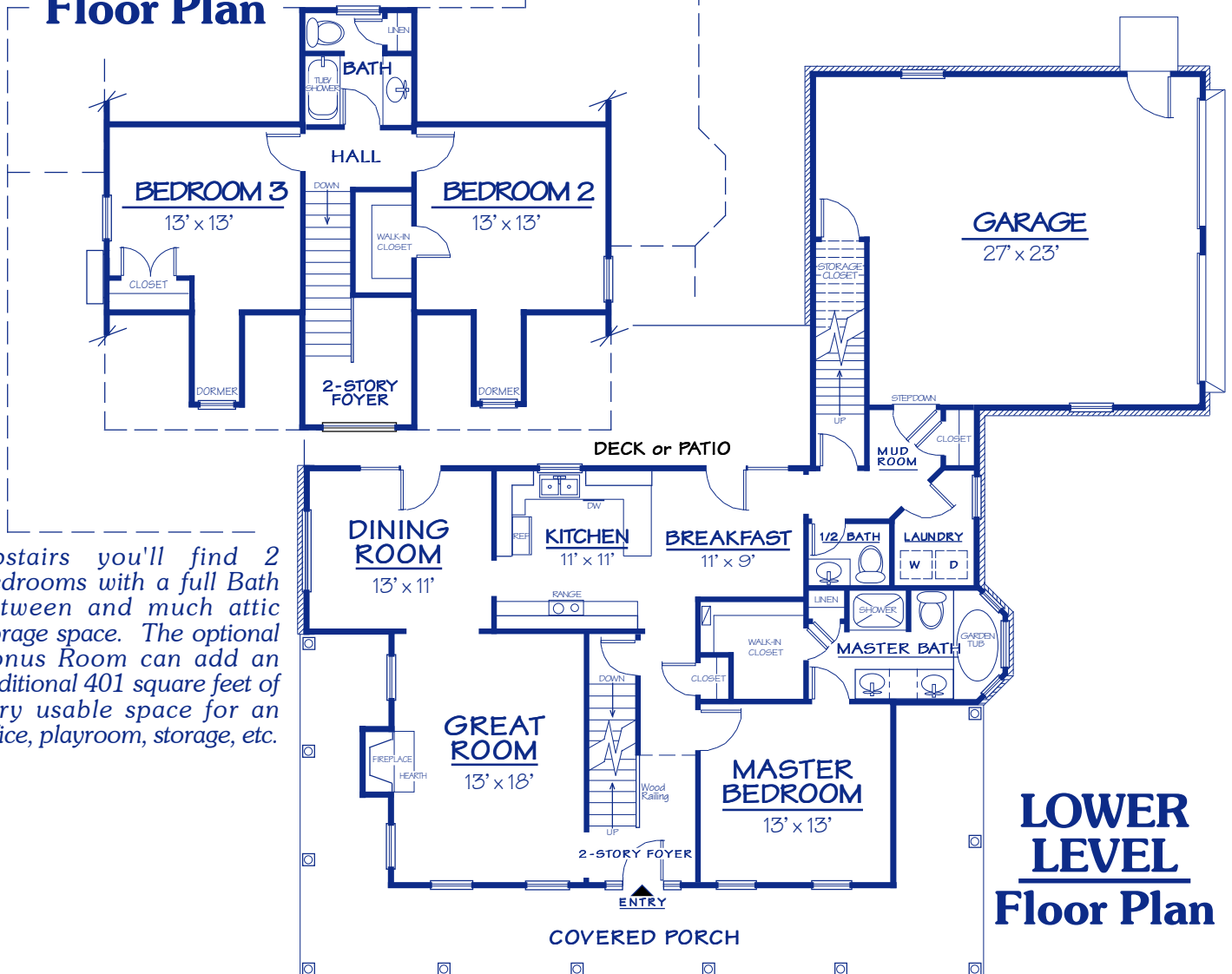
Located at: **525 McClelland Street**
(at 4th Street Bypass/Truck Route)

WIDTH: 64'-4" DEPTH: 64'-4" LIVING AREA: 1,906 sq. ft.

Plan# 1906

"The Montgomery", Plan# 1906 has many of the most desired features, a great floor plan and a beautiful Cape Cod design. This home features a Covered Porch, a dramatic 2-Story Foyer, 3 Bedrooms and a 2-Car Garage. The lower level has the Master Bedroom situated with a cozy Master Bath and walk-in closet. The Kitchen has both a Dining Room and Breakfast area adjacent. In the area leading to the Garage, you'll find the Laundry, Mud Room, 1/2 Bath and stairs leading up to an optional Bonus Room.

UPPER LEVEL Floor Plan



Upstairs you'll find 2 Bedrooms with a full Bath between and much attic storage space. The optional Bonus Room can add an additional 401 square feet of very usable space for an office, playroom, storage, etc.

PROPRIETARY INFORMATION:

The furnishing of this information does not convey any reproduction or construction rights.

This brochure is provided as general information for choosing your new home. Refer to blueprints and specifications for accurate details. Timber Truss Housing Systems, Inc. reserves the right to introduce changes in plans and specifications without notification or obligation.

©Timber Truss Housing Systems, Inc.

TrussMark Homes[®]
by **TIMBER TRUSS HOUSING SYSTEMS, INC.**
P.O. Box 996 • 525 McClelland Street
Salem, Virginia 24153-0996
Phone **540/387-0273** • Fax **540/389-0849**
www.timbertruss.com