

# THE SOUTHWAY

PLAN #  
**1904**



PLAN 1904 / ELEVATION "B"



PLAN 1904 / ELEVATION "A"

FLOOR PLANS OTHER SIDE

Timber Truss Housing Systems, Inc. has caused some TrussMark plans to be copyrighted by the United States Copyright Office, Library of Congress, Washington, D.C. Unauthorized use of the TrussMark plan, without the permission of Timber Truss Housing Systems, Inc., can lead to an award of damages, reimbursement of attorney's fees and costs, and the seizure or destruction of all infringements under Title 17, United States Code. Copyright law protection extends beyond exact duplication. An unauthorized use which is substantially similar to the plan is copyright infringement.

**DUPLICATION OF EVERY DETAIL OR EXACT COPYING IS NOT NECESSARY TO ESTABLISH INFRINGEMENT OF THE COPYRIGHT. MAKING MINOR CHANGES IN THE HOUSE PLAN IS NOT AN AUTHORIZED USE UNDER THE COPYRIGHT LAW. INFRINGEMENT OF COPYRIGHT CAN EXIST EVEN WHERE ONLY A PART IS COPIED.**

**TrussMark** Homes<sup>®</sup>  
by **TIMBER TRUSS HOUSING SYSTEMS, INC.**

P.O. Box 996  
Salem, Virginia 24153-0996

Phone **540/387-0273**

**800/766-9072**

Fax **540/389-0849**

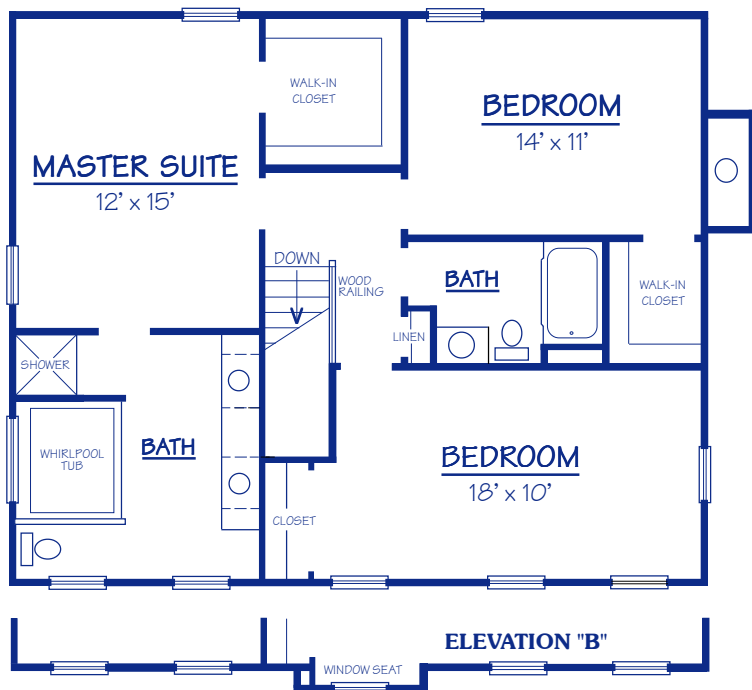
**[www.timbertruss.com](http://www.timbertruss.com)**

Located at: **525 McClelland Street**  
(at 4th Street Bypass/Truck Route)

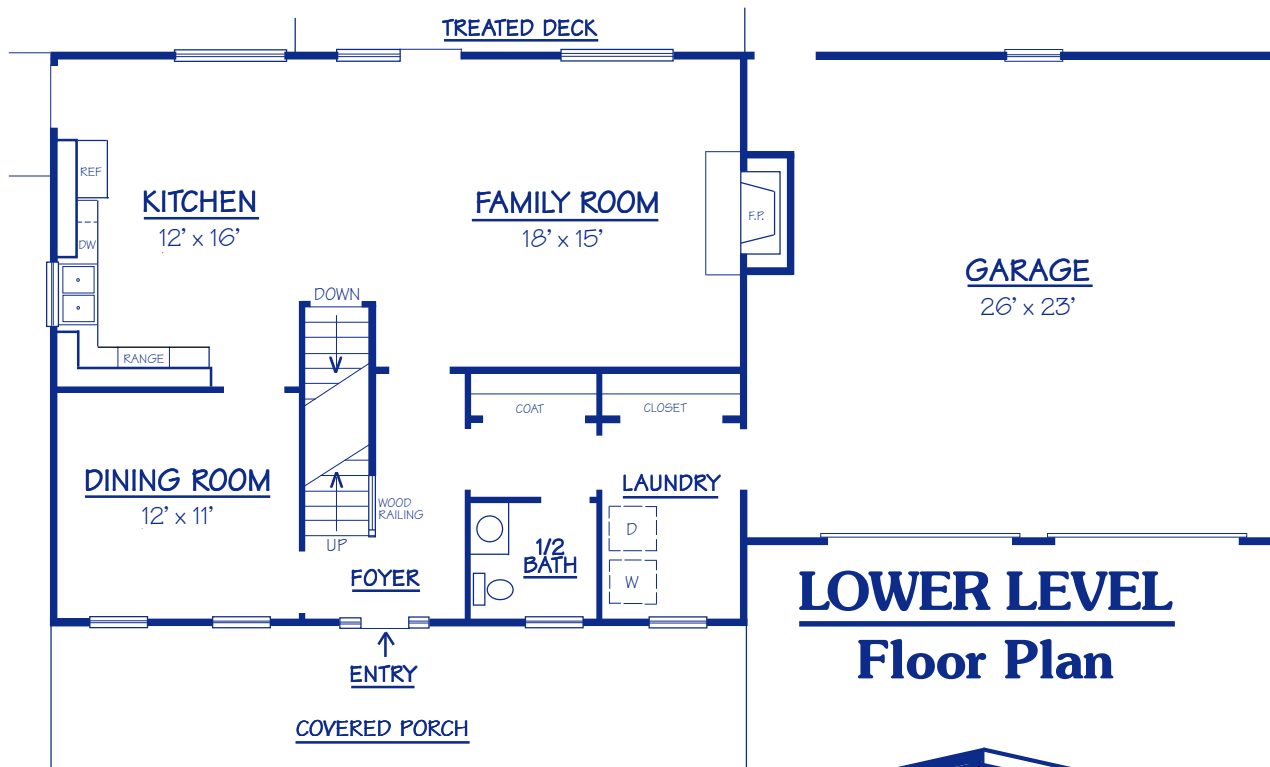
WIDTH: 60'-0" DEPTH: 28'-0" LIVING AREA: 1,904 sq. ft.

Plan# **1904**

This design is a roomy two-story featuring a covered porch and pleasing floor plan. Entering on the lower level, you'll experience a bright, inviting Foyer with a convenient coat closet, half bath, and laundry just off to the side. A formal Dining Room is found to the left. The Kitchen, with plenty of room for an eating area, adjoins a spacious Family Room with a warm, cozy fireplace. Upstairs you'll find a full bath, Master Suite with large bath area, and two additional bedrooms. Two car garage is optional.



**UPPER LEVEL**  
**Floor Plan**



**LOWER LEVEL**  
**Floor Plan**

**PROPRIETARY INFORMATION:**

The furnishing of this information does not convey any reproduction or construction rights.

This brochure is provided as general information for choosing your new home. Refer to blueprints and specifications for accurate details. Timber Truss Housing Systems, Inc. reserves the right to introduce changes in plans and specifications without notification or obligation.

2/Mar08SP

**TrussMark Homes**  
by **TIMBER TRUSS HOUSING SYSTEMS, INC.**  
P.O. Box 996 • 525 McClelland Street  
Salem, Virginia 24153-0996  
Phone **540/387-0273** • Fax **540/389-0849**  
[www.timbertruss.com](http://www.timbertruss.com)