

**THE**

# KENWICK

PLAN #

**1870  
1871**



**PLAN 1870 / ELEVATION "A"**

*FLOOR PLANS OTHER SIDE*

Timber Truss Housing Systems, Inc. has caused this TrussMark plan to be copyrighted by the United States Copyright Office, Library of Congress, Washington, D.C. Unauthorized use of copyrighted TrussMark plans, without the permission of Timber Truss Housing Systems, Inc., can lead to an award of damages, reimbursement of attorney's fees and costs, and the seizure or destruction of all infringements under Title 17, United States Code. Copyright law protection extends beyond exact duplication. An unauthorized use which is substantially similar to the plan is copyright infringement.

**DUPLICATION OF EVERY DETAIL OR EXACT COPYING IS NOT NECESSARY TO ESTABLISH INFRINGEMENT OF THE COPYRIGHT. MAKING MINOR CHANGES IN THE HOUSE PLAN IS NOT AN AUTHORIZED USE UNDER THE COPYRIGHT LAW. INFRINGEMENT OF COPYRIGHT CAN EXIST EVEN WHERE ONLY A PART IS COPIED.**

**TrussMark** Homes<sup>®</sup>  
by **TIMBER TRUSS HOUSING SYSTEMS, INC.**

P.O. Box 996  
Salem, Virginia 24153-0996

Phone **540/387-0273**

**800/766-9072**

Fax **540/389-0849**

**[www.timbertruss.com](http://www.timbertruss.com)**

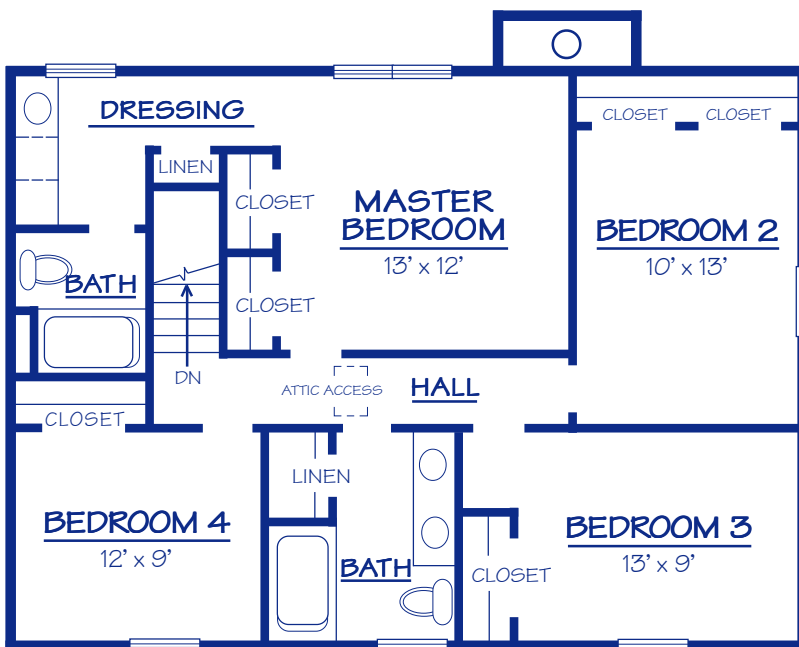
Located at: **525 McClelland Street**  
(at 4th Street Bypass/Truck Route)

WIDTH: 60'-0" DEPTH: 31'-0" LIVING AREA: 1,872 sq. ft.

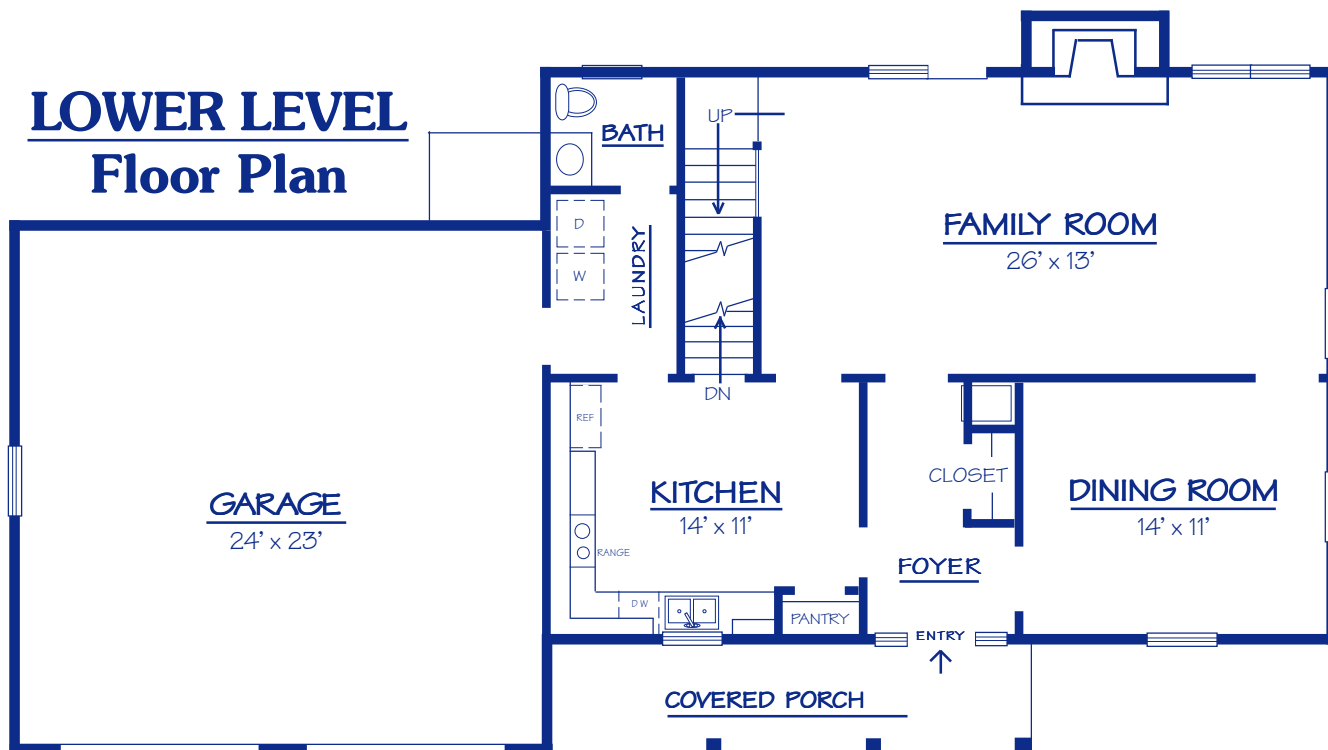
Plan# **1870**<sup>(FRAME)</sup>  
**1871**<sup>(BRICK)</sup>

The "Kenwick", Plan# 1870 is a four Bedroom plan featuring a large Great Room with energy-efficient fireplace and formal Dining Room. The spacious Kitchen has a pantry and access to the 2-car Garage, Laundry and 1/2 Bath. The upper level Master Bedroom has two large closets, dressing area and private Bath. The other three Bedrooms have large closets and share a roomy Bath with a large linen closet.

## UPPER LEVEL Floor Plan



## LOWER LEVEL Floor Plan



### PROPRIETARY INFORMATION:

The furnishing of this information does not convey any reproduction or construction rights.

This brochure is provided as general information for choosing your new home. Refer to blueprints and specifications for accurate details. Timber Truss Housing Systems, Inc. reserves the right to introduce changes in plans and specifications without notification or obligation.

© Timber Truss Housing Systems, Inc.

aug05temp

**TrussMark** Homes<sup>®</sup>  
by **TIMBER TRUSS HOUSING SYSTEMS, INC.**  
P.O. Box 996 • 525 McClelland Street  
Salem, Virginia 24153-0996  
Phone **540/387-0273** • Fax **540/389-0849**  
[www.timbertruss.com](http://www.timbertruss.com)