

THE CHADWORTH

PLAN #
1858



PLAN 1858 / ELEVATION "A"

FLOOR PLANS OTHER SIDE

Timber Truss Housing Systems, Inc. has caused this TrussMark plan to be copyrighted by the United States Copyright Office, Library of Congress, Washington, D.C. Unauthorized use of copyrighted TrussMark plans, without the permission of Timber Truss Housing Systems, Inc., can lead to an award of damages, reimbursement of attorney's fees and costs, and the seizure or destruction of all infringements under Title 17, United States Code. Copyright law protection extends beyond exact duplication. An unauthorized use which is substantially similar to the plan is copyright infringement.

DUPLICATION OF EVERY DETAIL OR EXACT COPYING IS NOT NECESSARY TO ESTABLISH INFRINGEMENT OF THE COPYRIGHT. MAKING MINOR CHANGES IN THE HOUSE PLAN IS NOT AN AUTHORIZED USE UNDER THE COPYRIGHT LAW. INFRINGEMENT OF COPYRIGHT CAN EXIST EVEN WHERE ONLY A PART IS COPIED.

TrussMark Homes[®]
by **TIMBER TRUSS HOUSING SYSTEMS, INC.**

P.O. Box 996
Salem, Virginia 24153-0996

Phone **540/387-0273**

800/766-9072

Fax **540/389-0849**

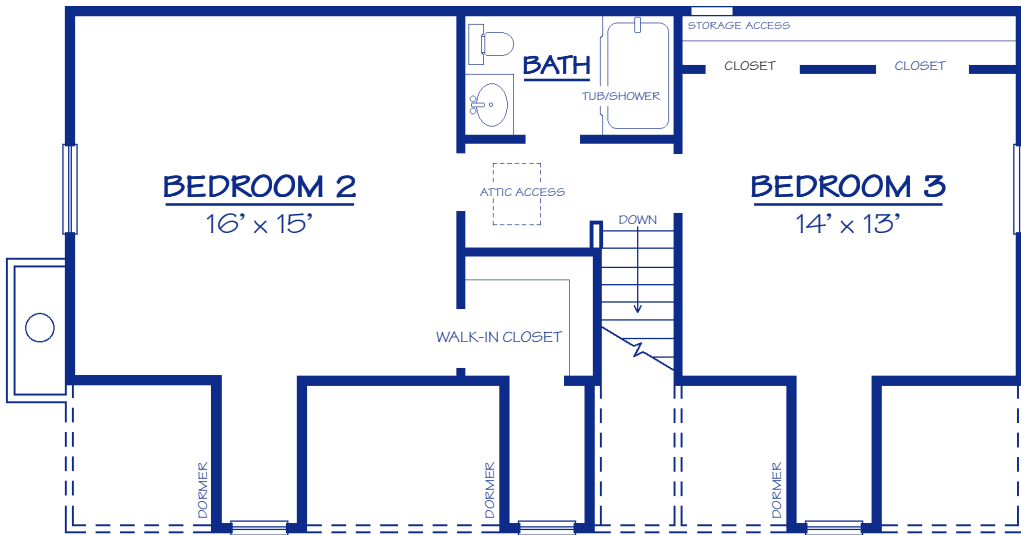
www.timbertruss.com

Located at: **525 McClelland Street**
(at 4th Street Bypass/Truck Route)

WIDTH: 56'-0" DEPTH: 36'-0" LIVING AREA: 1,858 sq. ft.

Plan# **1858**

UPPER LEVEL Floor Plan



The "Chadworth", Plan# 1858, is an attractive addition to the TrussMark family of high-quality homes. This Cape Cod style home features a covered porch and dormers that give a "Country" look that is always popular. A large Great Room with fireplace awaits your entry. A Kitchen with island and nook area are to the rear of this home with an adjacent laundry nearby. A half-bath is found just off the Great Room. The lower level is completed by the Master Suite with large, private bath and dressing area with huge walk-in closet. The upper level has 2 Bedrooms with large closets, and a full bath. The "Chadworth" is a lovely 3 Bedroom, 2-1/2 bath home that's sure to meet today's needs of most families.



PROPRIETARY INFORMATION:

The furnishing of this information does not convey any reproduction or construction rights.

This brochure is provided as general information for choosing your new home. Refer to blueprints and specifications for accurate details. Timber Truss Housing Systems, Inc. reserves the right to introduce changes in plans and specifications without notification or obligation.

©Timber Truss Housing Systems, Inc.

TrussMark Homes[®]
 by **TIMBER TRUSS HOUSING SYSTEMS, INC.**
 P.O. Box 996 • 525 McClelland Street
 Salem, Virginia 24153-0996
 Phone **540/387-0273** • Fax **540/389-0849**
www.timbertruss.com