

**THE**

# ROSELAWN

PLAN #  
**1814**



**PLAN 1814 / ELEVATION "A"**

*FLOOR PLANS OTHER SIDE*

Timber Truss Housing Systems, Inc. has caused this TrussMark plan to be copyrighted by the United States Copyright Office, Library of Congress, Washington, D.C. Unauthorized use of the TrussMark plan, without the permission of Timber Truss Housing Systems, Inc., can lead to an award of damages, reimbursement of attorney's fees and costs, and the seizure or destruction of all infringements under Title 17, United States Code. Copyright law protection extends beyond exact duplication. An unauthorized use which is substantially similar to the plan is copyright infringement.

**DUPLICATION OF EVERY DETAIL OR EXACT COPYING IS NOT NECESSARY TO ESTABLISH INFRINGEMENT OF THE COPYRIGHT. MAKING MINOR CHANGES IN THE HOUSE PLAN IS NOT AN AUTHORIZED USE UNDER THE COPYRIGHT LAW. INFRINGEMENT OF COPYRIGHT CAN EXIST EVEN WHERE ONLY A PART IS COPIED.**

**TrussMark** Homes<sup>®</sup>  
by **TIMBER TRUSS HOUSING SYSTEMS, INC.**

P.O. Box 996  
Salem, Virginia 24153-0996

Phone **540/387-0273**

**800/766-9072**

Fax **540/389-0849**

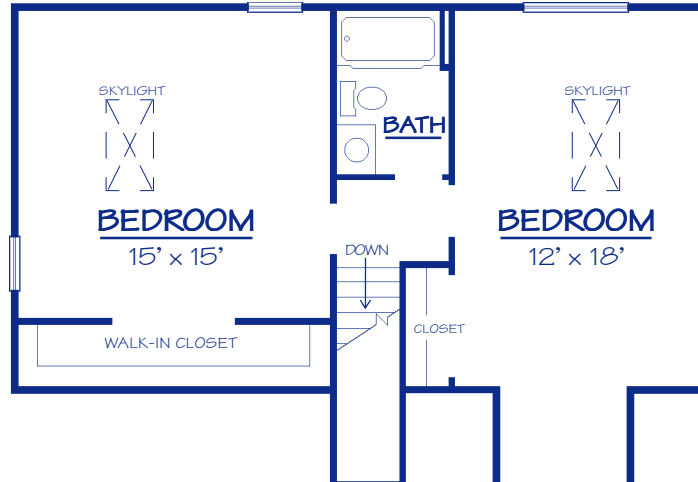
**[www.timbertruss.com](http://www.timbertruss.com)**

*Located at: 525 McClelland Street  
(at 4th Street Bypass/Truck Route)*

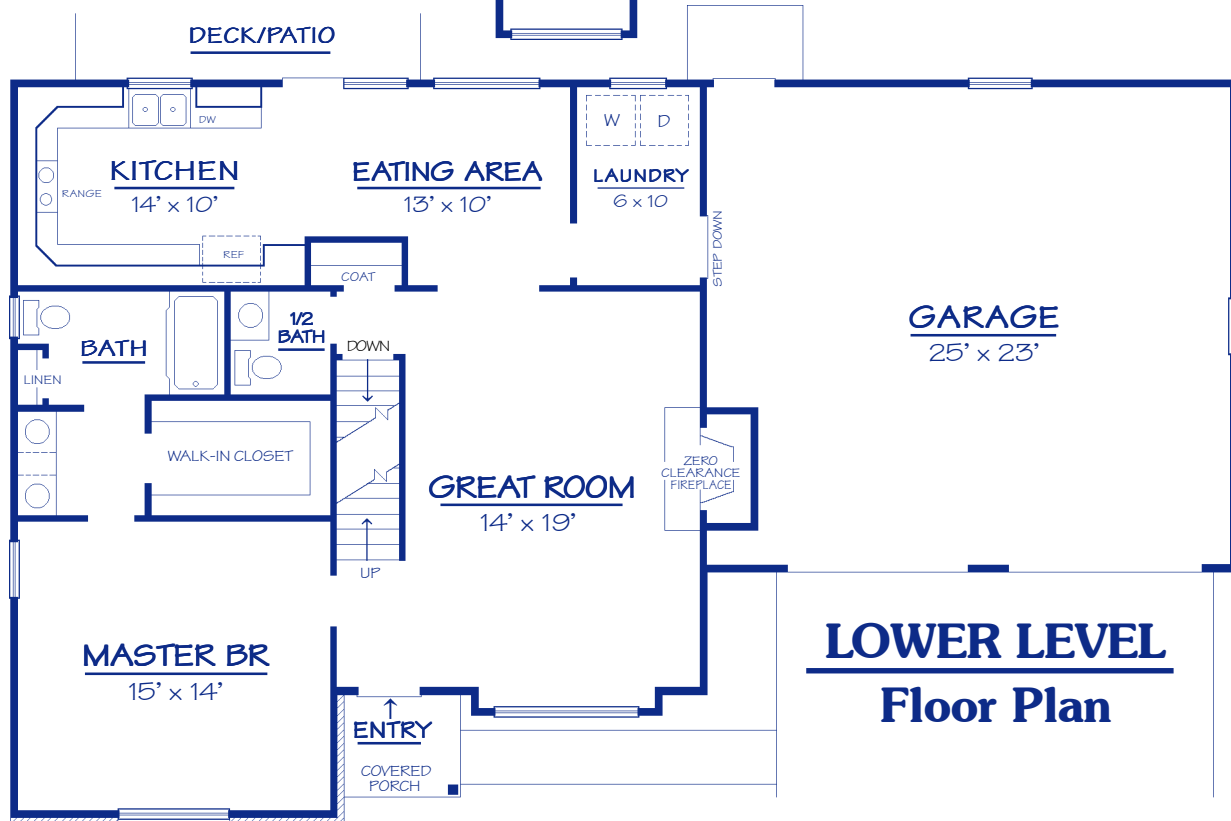
WIDTH: 60'-0" DEPTH: 36'-0" LIVING AREA: 1,814 sq. ft.

Plan# **1814**

This plan has a beautifully modern elevation that features bold half-round windows and covered porch. The first floor Master Bedroom has a large walk-in closet conveniently located within the bath and dressing area. A nice eating area is located adjacent to the Kitchen and Great Room. The two-car garage is accessed through the convenient laundry room. The second floor has two spacious Bedrooms with skylights, and a full bath.



## UPPER LEVEL Floor Plan



## LOWER LEVEL Floor Plan

### PROPRIETARY INFORMATION:

The furnishing of this information does not convey any reproduction or construction rights.

This brochure is provided as general information for choosing your new home. Refer to blueprints and specifications for accurate details. Timber Truss Housing Systems, Inc. reserves the right to introduce changes in plans and specifications without notification or obligation.

©Timber Truss Housing Systems, Inc.

**TrussMark** Homes<sup>®</sup>  
by **TIMBER TRUSS HOUSING SYSTEMS, INC.**  
P.O. Box 996 • 525 McClelland Street  
Salem, Virginia 24153-0996  
Phone **540/387-0273** • Fax **540/389-0849**  
[www.timbertruss.com](http://www.timbertruss.com)