

**THE**

# ANDOVER

PLAN #

**1634**



**PLAN 1634 / ELEVATION "C"**

*FLOOR PLANS OTHER SIDE*

Timber Truss Housing Systems, Inc. has caused this TrussMark plan to be copyrighted by the United States Copyright Office, Library of Congress, Washington, D.C. Unauthorized use of the TrussMark plan, without the permission of Timber Truss Housing Systems, Inc., can lead to an award of damages, reimbursement of attorney's fees and costs, and the seizure or destruction of all infringements under Title 17, United States Code. Copyright law protection extends beyond exact duplication. An unauthorized use which is substantially similar to the plan is copyright infringement.

**DUPLICATION OF EVERY DETAIL OR EXACT COPYING IS NOT NECESSARY TO ESTABLISH INFRINGEMENT OF THE COPYRIGHT. MAKING MINOR CHANGES IN THE HOUSE PLAN IS NOT AN AUTHORIZED USE UNDER THE COPYRIGHT LAW. INFRINGEMENT OF COPYRIGHT CAN EXIST EVEN WHERE ONLY A PART IS COPIED.**

**TrussMark Homes**  
by **TIMBER TRUSS HOUSING SYSTEMS, INC.**

P.O. Box 996  
Salem, Virginia 24153-0996

Phone **540/387-0273**

**800/766-9072**

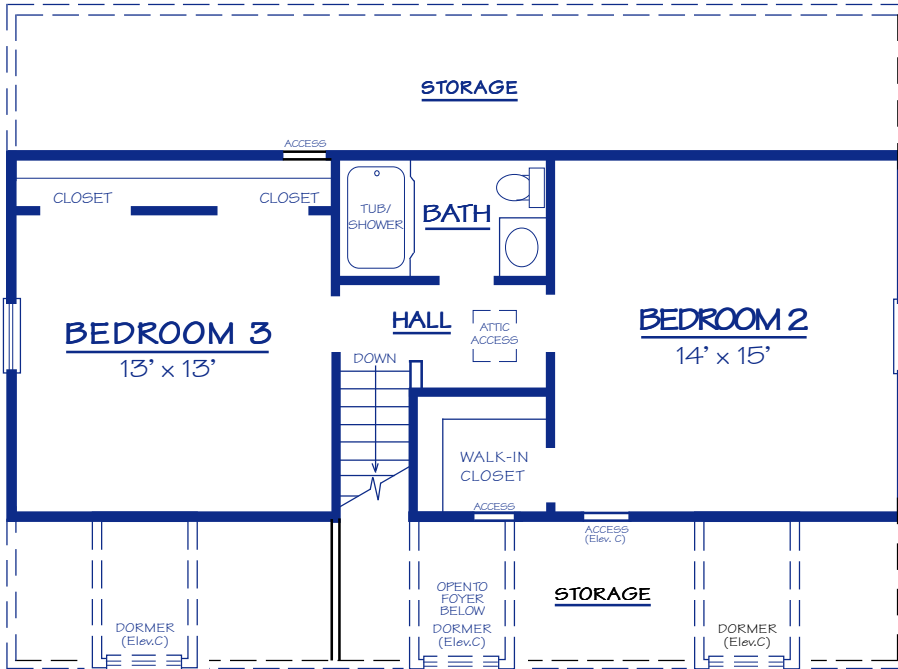
Fax **540/389-0849**

[www.timbertruss.com](http://www.timbertruss.com)

Located at: **525 McClelland Street**  
(at 4th Street Bypass/Truck Route)

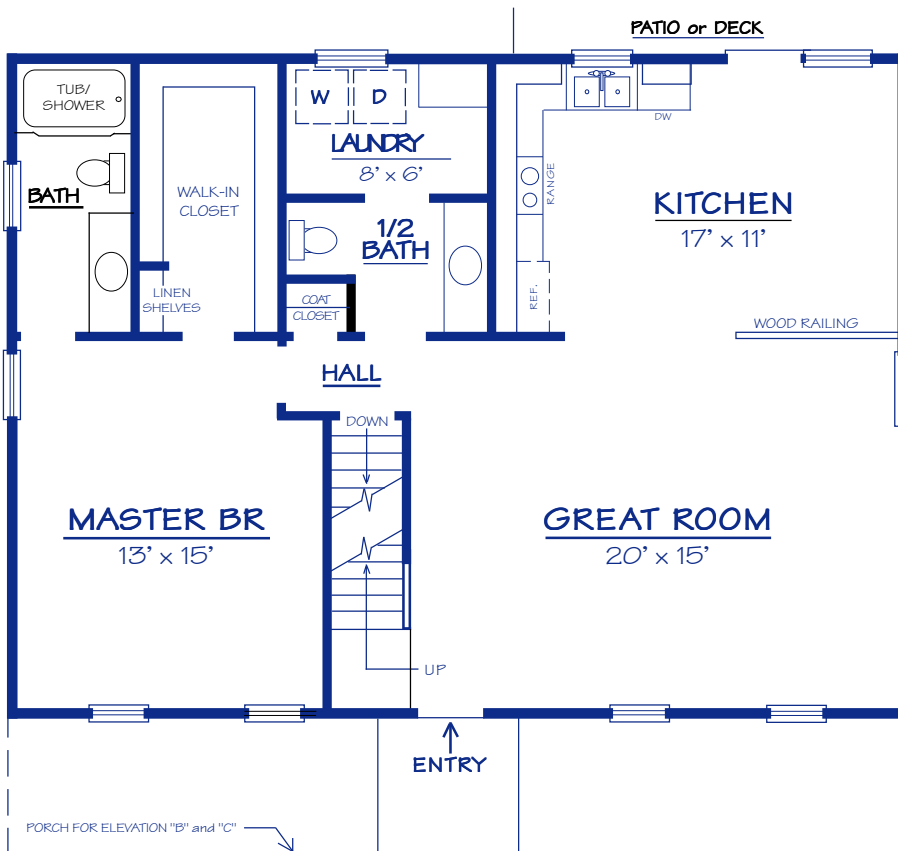
WIDTH: 38'-0" DEPTH 28'-0" LIVING AREA: 1,634 sq. ft.

Plan# **1634**



The "Andover" features an efficient floor plan with lots of open living space and lots of closet and storage space. There are three Bedrooms in this plan with a separated lower level Master Bedroom and two Bedrooms upstairs. A large Kitchen has a patio door leading to patio or deck. A convenient laundry area is located off the half bath. Alternate elevations are available for this plan. Elevation "A" has no front porch or dormers. Elevation "B" adds a Front Porch. Elevation "C" adds a Front Porch and dormers as shown on front.

## UPPER LEVEL Floor Plan



## LOWER LEVEL Floor Plan

**PROPRIETARY INFORMATION:**

The furnishing of this information does not convey any reproduction or construction rights.

This brochure is provided as general information for choosing your new home. Refer to blueprints and specifications for accurate details. Timber Truss Housing Systems, Inc. reserves the right to introduce changes in plans and specifications without notification or obligation.

©TIMBER TRUSS HOUSING SYSTEMS, INC.

**TrussMark Homes**  
 by **TIMBER TRUSS HOUSING SYSTEMS, INC.**  
 P.O. Box 996 • 525 McClelland Street  
 Salem, Virginia 24153-0996  
 Phone **540/387-0273** • Fax **540/389-0849**  
[www.timbertruss.com](http://www.timbertruss.com)