

THE DAVIDSON

PLAN #
1582



PLAN 1582 / ELEVATION "A"

FLOOR PLANS OTHER SIDE

Timber Truss Housing Systems, Inc. has caused some TrussMark plans to be copyrighted by the United States Copyright Office, Library of Congress, Washington, D.C. Unauthorized use of copyrighted TrussMark plans, without the permission of Timber Truss Housing Systems, Inc., can lead to an award of damages, reimbursement of attorney's fees and costs, and the seizure or destruction of all infringements under Title 17, United States Code. Copyright law protection extends beyond exact duplication. An unauthorized use which is substantially similar to the plan is copyright infringement.

DUPLICATION OF EVERY DETAIL OR EXACT COPYING IS NOT NECESSARY TO ESTABLISH INFRINGEMENT OF THE COPYRIGHT. MAKING MINOR CHANGES IN THE HOUSE PLAN IS NOT AN AUTHORIZED USE UNDER THE COPYRIGHT LAW. INFRINGEMENT OF COPYRIGHT CAN EXIST EVEN WHERE ONLY A PART IS COPIED.

TrussMark Homes[®]
by **TIMBER TRUSS HOUSING SYSTEMS, INC.**

P.O. Box 996
Salem, Virginia 24153-0996

Phone **540/387-0273**

800/766-9072

Fax **540/389-0849**

www.timbertruss.com

Located at: **525 McClelland Street**
(at 4th Street Bypass/Truck Route)

WIDTH: 46'-0" DEPTH: 30'-0" LIVING AREA: 1,582 sq. ft.

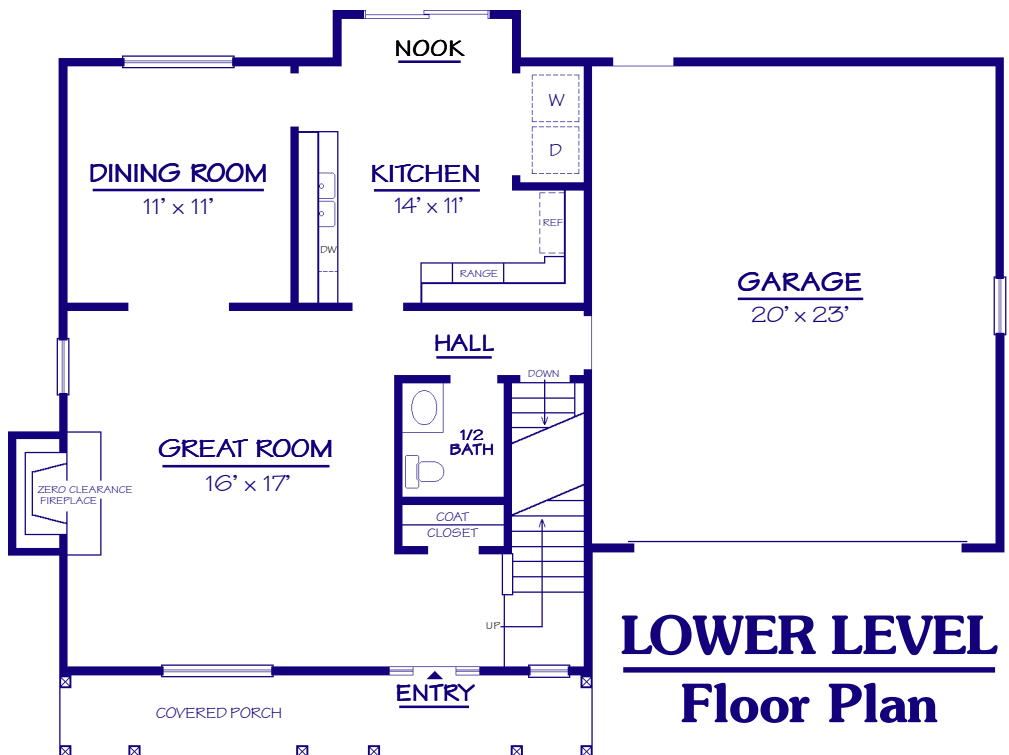
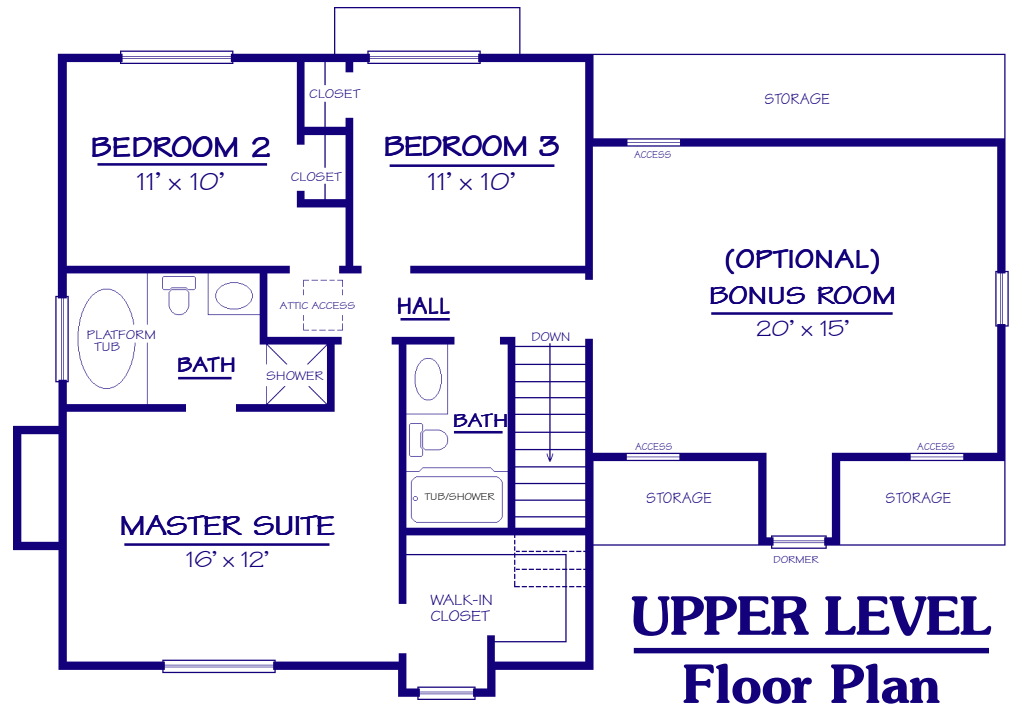
Plan# **1582**

**OPTIONAL
BONUS ROOM
ADDS
296 SQ. FT.
TO PLAN
GIVING A
TOTAL OF
1,878 SQ. FT.**

Plan 1582, The "Davidson" is a modest sized home that offers a charming elevation and the many comforts of a larger home. An optional "Bonus Room" can be included upstairs which would make efficient use of the available space. The covered porch provides an inviting front entry area which opens to the large Great Room with fireplace. This plan also includes a Dining Room and Kitchen with nook area and laundry. A hall leads to a convenient half-bath, to the garage, or downstairs.

The upper level has three bedrooms, full bath and optional Bonus Room. The Master Suite has a spacious walk-in closet and bath area with platform tub and shower.

This plan is sure to become one of the favorites of all the quality TrussMark Home designs from Timber Truss.



PROPRIETARY INFORMATION:

The furnishing of this information does not convey any reproduction or construction rights.

This brochure is provided as general information for choosing your new home. Refer to blueprints and specifications for accurate details. Timber Truss Housing Systems, Inc. reserves the right to introduce changes in plans and specifications without notification or obligation.

2M06maySP

TrussMark Homes[®]
 by TIMBER TRUSS HOUSING SYSTEMS, INC.
 P.O. Box 996 • 525 McClelland Street
 Salem, Virginia 24153-0996
 Phone 540/387-0273 • Fax 540/389-0849
 www.timbertruss.com