

NEWEST TRUSSMARKS

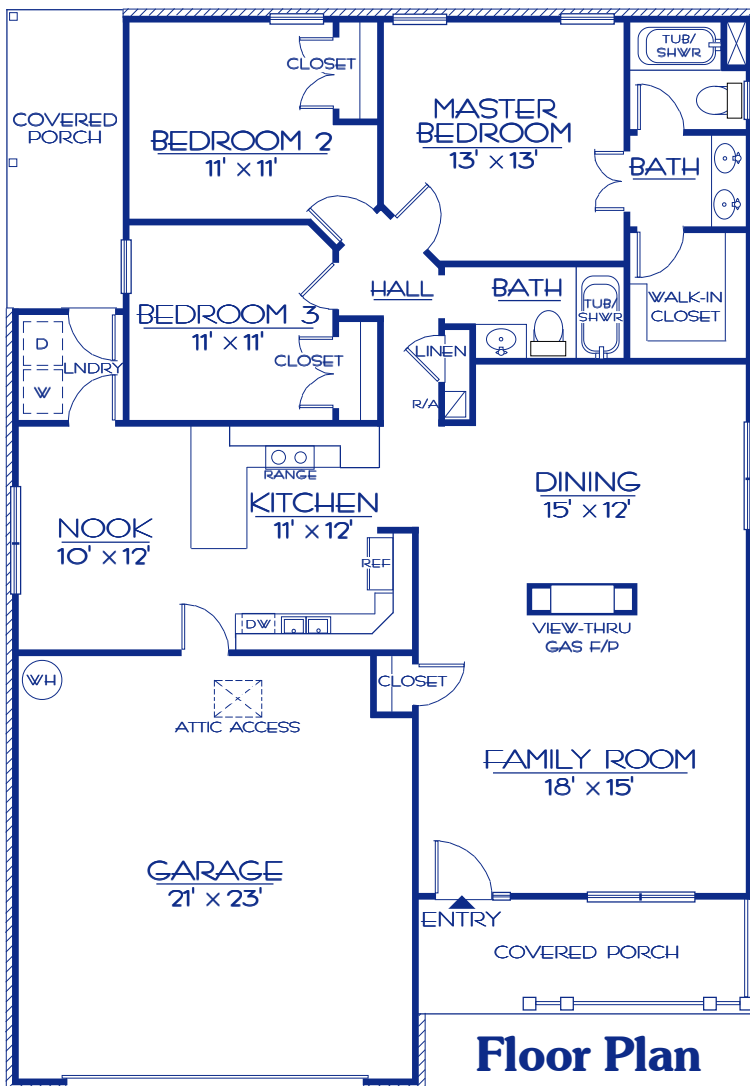
THE BROOKNEAL

PLAN #
1544

WIDTH: 40'-0" DEPTH: 58'-0" LIVING AREA: 1,544 sq. ft.



PLAN 1544 / ELEVATION "A"



Floor Plan

The "Brookneal", Plan# 1544, is a comfortable 3 Bedroom, 2 Bath ranch with double car Garage. Designed to be built on a slab or crawl space, it could be easily modified for a basement. The Dining area and Family Room are separated by a view-thru gas fireplace. The Kitchen has an adjacent nook area and Laundry which leads to another Covered Porch to the rear of the home. The Master Bedroom has a conveniently separated Bath and walk-in closet. A lot of nice features are found in this modestly sized home.

PROPRIETARY INFORMATION:

The furnishing of this information does not convey any reproduction or construction rights.

This brochure is provided as general information for choosing your new home. Refer to blueprints and specifications for accurate details. Timber Truss Housing Systems, Inc. reserves the right to introduce changes in plans and specifications without notification or obligation.

Timber Truss Housing Systems, Inc.

3-09

TrussMark Homes
by **TIMBER TRUSS HOUSING SYSTEMS, INC.**
P.O. Box 996 • 525 McClelland Street
Salem, Virginia 24153-0996
Phone **540/387-0273** • **800/766-9072**
Fax **540/389-0849** www.timbertruss.com