

NEWEST TRUSSMARKS

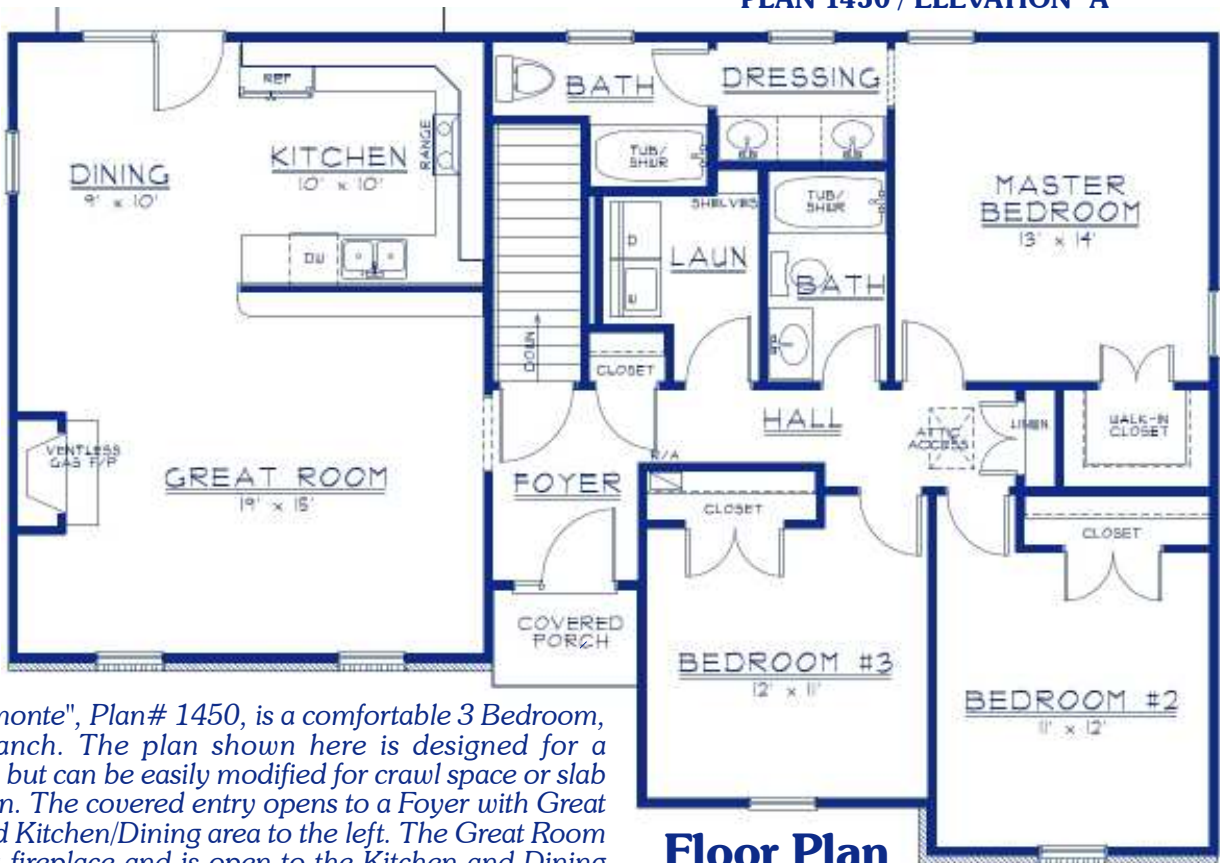
THE
BELMONTE

PLAN #
1450

WIDTH:50'-0" DEPTH: 34'-0" LIVING AREA: 1,450 sq. ft.



PLAN 1450 / ELEVATION "A"



Floor Plan

The "Belmonte", Plan# 1450, is a comfortable 3 Bedroom, 2 Bath ranch. The plan shown here is designed for a basement but can be easily modified for crawl space or slab foundation. The covered entry opens to a Foyer with Great Room and Kitchen/Dining area to the left. The Great Room features a fireplace and is open to the Kitchen and Dining area. A Laundry Room is centrally located for access from the three Bedrooms. The Master Bedroom has a walk-in closet and a nice private dressing and bath area. A lot of nice features are found in this modestly sized home.

PROPRIETARY INFORMATION:

The furnishing of this information does not convey any reproduction or construction rights. This brochure is provided as general information for choosing your new home. Refer to blueprints and specifications for accurate details. Timber Truss Housing Systems, Inc. reserves the right to introduce changes in plans and specifications without notification or obligation. Timber Truss Housing Systems, Inc.

3-09

TrussMark Homes[®]
by **TIMBER TRUSS HOUSING SYSTEMS, INC.**
P.O. Box 996 • 525 McClelland Street
Salem, Virginia 24153-0996
Phone **540/387-0273** • Fax **540/389-0849**
www.timbertruss.com