

THE WEDGEWOOD

PLAN #
1432



PLAN 1432 / ELEVATION "A"

FLOOR PLAN OTHER SIDE

Timber Truss Housing Systems, Inc. has caused this TrussMark plan to be copyrighted by the United States Copyright Office, Library of Congress, Washington, D.C. Unauthorized use of copyrighted TrussMark plans, without the permission of Timber Truss Housing Systems, Inc., can lead to an award of damages, reimbursement of attorney's fees and costs, and the seizure or destruction of all infringements under Title 17, United States Code. Copyright law protection extends beyond exact duplication. An unauthorized use which is substantially similar to the plan is copyright infringement.

DUPLICATION OF EVERY DETAIL OR EXACT COPYING IS NOT NECESSARY TO ESTABLISH INFRINGEMENT OF THE COPYRIGHT. MAKING MINOR CHANGES IN THE HOUSE PLAN IS NOT AN AUTHORIZED USE UNDER THE COPYRIGHT LAW. INFRINGEMENT OF COPYRIGHT CAN EXIST EVEN WHERE ONLY A PART IS COPIED.

**TrussMark Homes**
by TIMBER TRUSS HOUSING SYSTEMS, INC.

P.O. Box 996
Salem, Virginia 24153-0996

Phone **540/387-0273**

800/766-9072

Fax **540/389-0849**

www.timbertruss.com

Located at: **525 McClelland Street**
(at 4th Street Bypass/Truck Route)

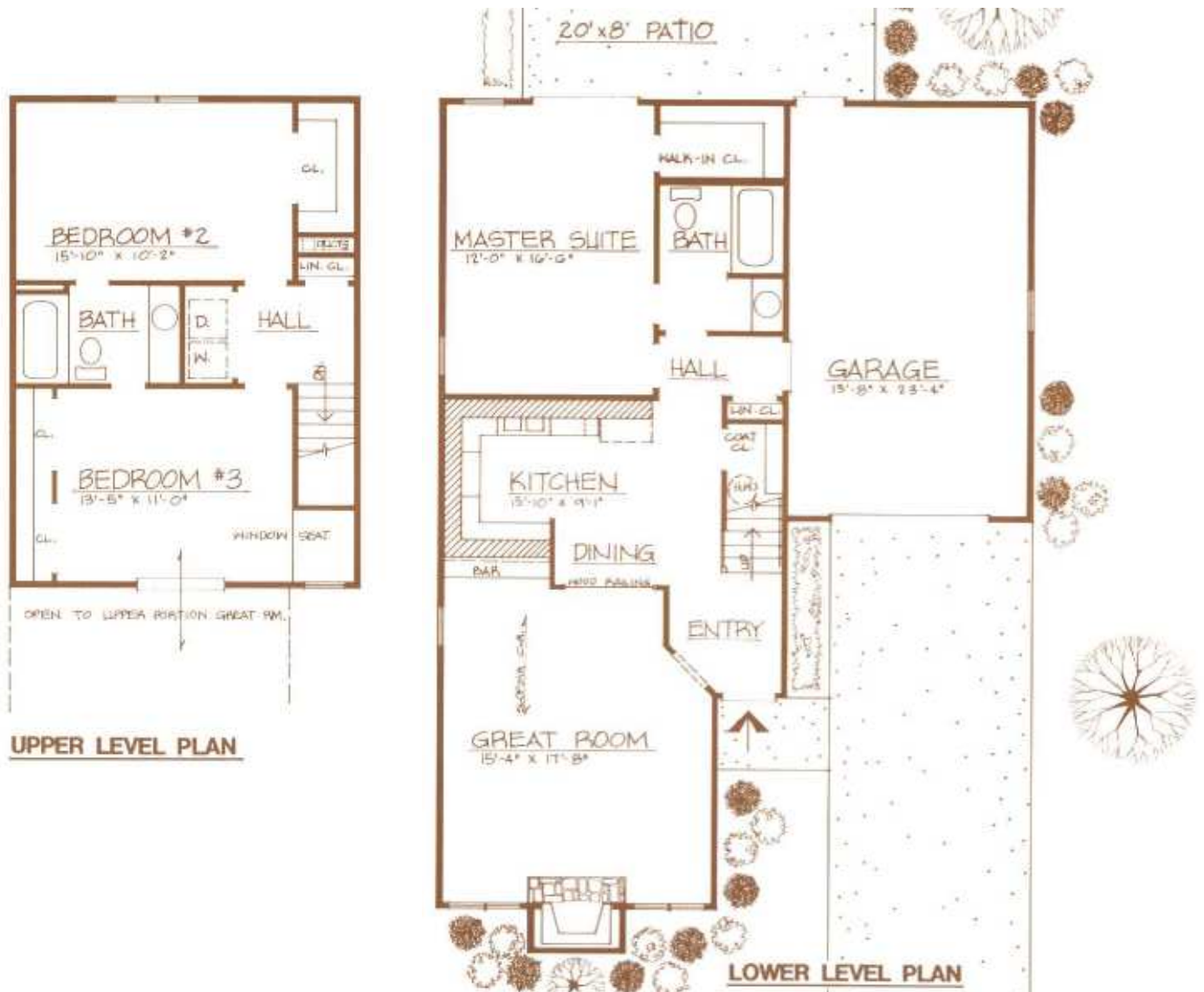
WIDTH: 34'-0" DEPTH: 48'-6" LIVING AREA: 1,432 sq. ft.

Plan# **1432**

The "Wedgewood" Plan 1432 is a 3 Bedroom, 2 Bath home which seems to be more like 1,800 square feet than the actual 1,432 that it is. Features include: an entry Foyer, a really large Great Room with vaulted ceiling and Bar, adjoining Kitchen and dining area, lower level Master Suite, and Garage. Upstairs are two Bedrooms, Bath and Laundry Room. Bedroom #3 has a window seat and overlook into the Great Room. This plan maximizes space and has an outstanding exterior appeal. Elevation B has influences of a colonial look. This plan could also make an excellent duplex using 2 units, or would make an ideal lake home.



Alternate Elevation "B"



PROPRIETARY INFORMATION:

The furnishing of this information does not convey any reproduction or construction rights.

This brochure is provided as general information for choosing your new home. Refer to blueprints and specifications for accurate details. Timber Truss Housing Systems, Inc. reserves the right to introduce changes in plans and specifications without notification or obligation.

©Timber Truss Housing Systems, Inc.

TrussMark Homes[®]
by **TIMBER TRUSS HOUSING SYSTEMS, INC.**
P.O. Box 996 • 525 McClelland Street
Salem, Virginia 24153-0996
Phone **540/387-0273** • Fax **540/389-0849**
www.timbertruss.com