

# THE RIDGEVIEW

PLAN #  
**1416**



PLAN 1416 / ELEVATION "A"

FLOOR PLAN OTHER SIDE

Timber Truss Housing Systems, Inc. has caused this TrussMark plan to be copyrighted by the United States Copyright Office, Library of Congress, Washington, D.C. Unauthorized use of copyrighted TrussMark plans, without the permission of Timber Truss Housing Systems, Inc., can lead to an award of damages, reimbursement of attorney's fees and costs, and the seizure or destruction of all infringements under Title 17, United States Code. Copyright law protection extends beyond exact duplication. An unauthorized use which is substantially similar to the plan is copyright infringement.

**DUPLICATION OF EVERY DETAIL OR EXACT COPYING IS NOT NECESSARY TO ESTABLISH INFRINGEMENT OF THE COPYRIGHT. MAKING MINOR CHANGES IN THE HOUSE PLAN IS NOT AN AUTHORIZED USE UNDER THE COPYRIGHT LAW. INFRINGEMENT OF COPYRIGHT CAN EXIST EVEN WHERE ONLY A PART IS COPIED.**

**TrussMark** Homes<sup>®</sup>  
by **TIMBER TRUSS HOUSING SYSTEMS, INC.**

P.O. Box 996  
Salem, Virginia 24153-0996

Phone **540/387-0273**

**800/766-9072**

Fax **540/389-0849**

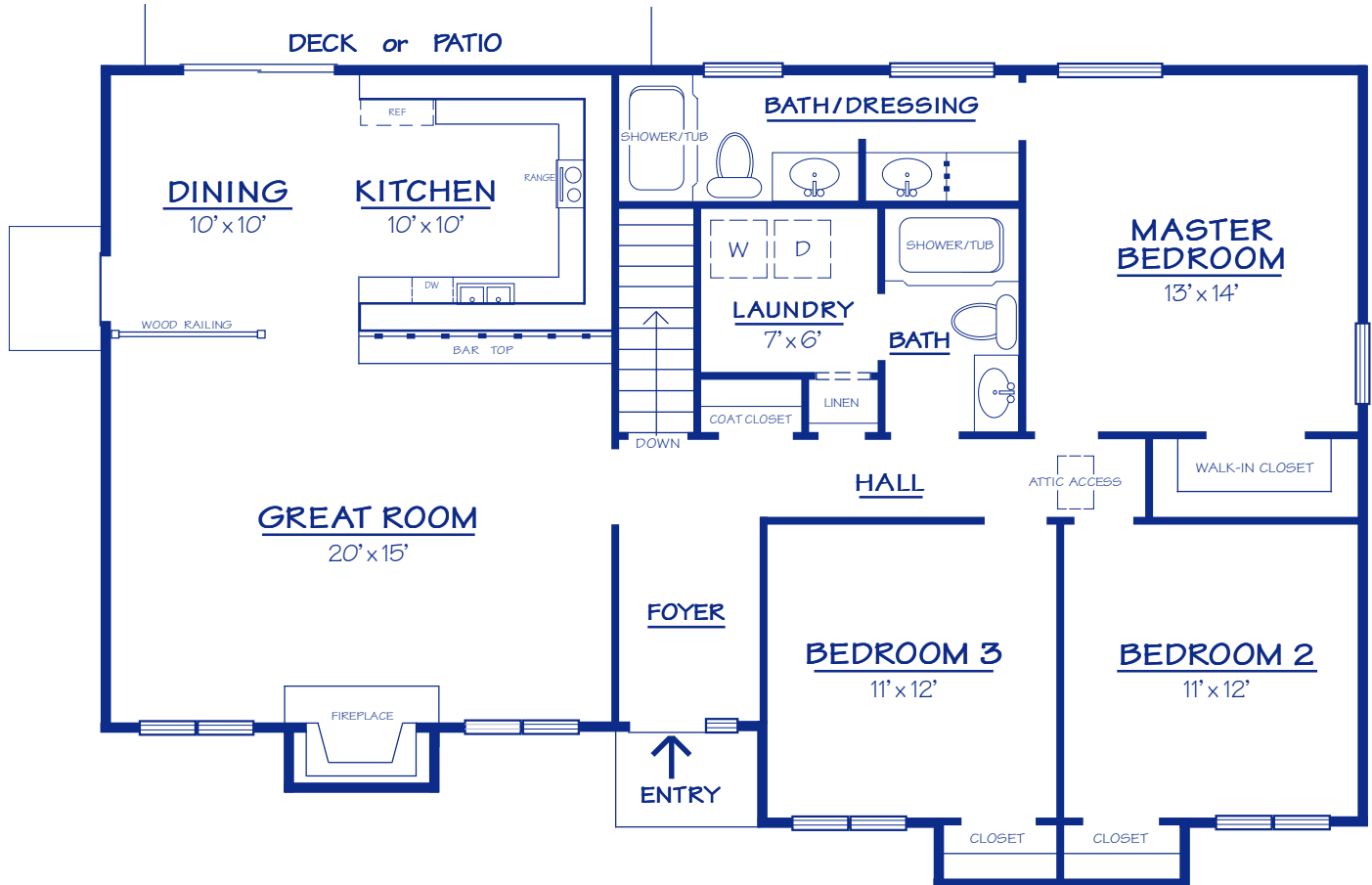
**[www.timbertruss.com](http://www.timbertruss.com)**

Located at: **525 McClelland Street**  
(at 4th Street Bypass/Truck Route)

WIDTH: 50'-0" DEPTH: 30'-0" LIVING AREA: 1,416 sq. ft.

Plan# **1416**

The "Ridgeview", Plan# 1416 has the features found in much larger homes. The large Kitchen has an adjoining bar to the Great Room. The Dining Room is also open to the spacious Great Room. The Foyer is a nice feature of this 3-Bedroom home as well as the convenient Laundry located on the main floor. The Master Bedroom has a popular dressing area adjoining the Master Bath. The Bedrooms feature lots of wall space, eliminating any problems of furniture arrangement. This classic TrussMark Home has a design that will always conform to the modern lifestyle.



**Floor Plan**



**Alternate Elevation:** Plan 1416 / Elevation "B"

**PROPRIETARY INFORMATION:**

The furnishing of this information does not convey any reproduction or construction rights.

This brochure is provided as general information for choosing your new home. Refer to blueprints and specifications for accurate details. Timber Truss Housing Systems, Inc. reserves the right to introduce changes in plans and specifications without notification or obligation.

©Timber Truss Housing Systems, Inc.

**TrussMark Homes**  
by **TIMBER TRUSS HOUSING SYSTEMS, INC.**  
P.O. Box 996 • 525 McClelland Street  
Salem, Virginia 24153-0996  
Phone **540/387-0273** • Fax **540/389-0849**  
[www.timbertruss.com](http://www.timbertruss.com)