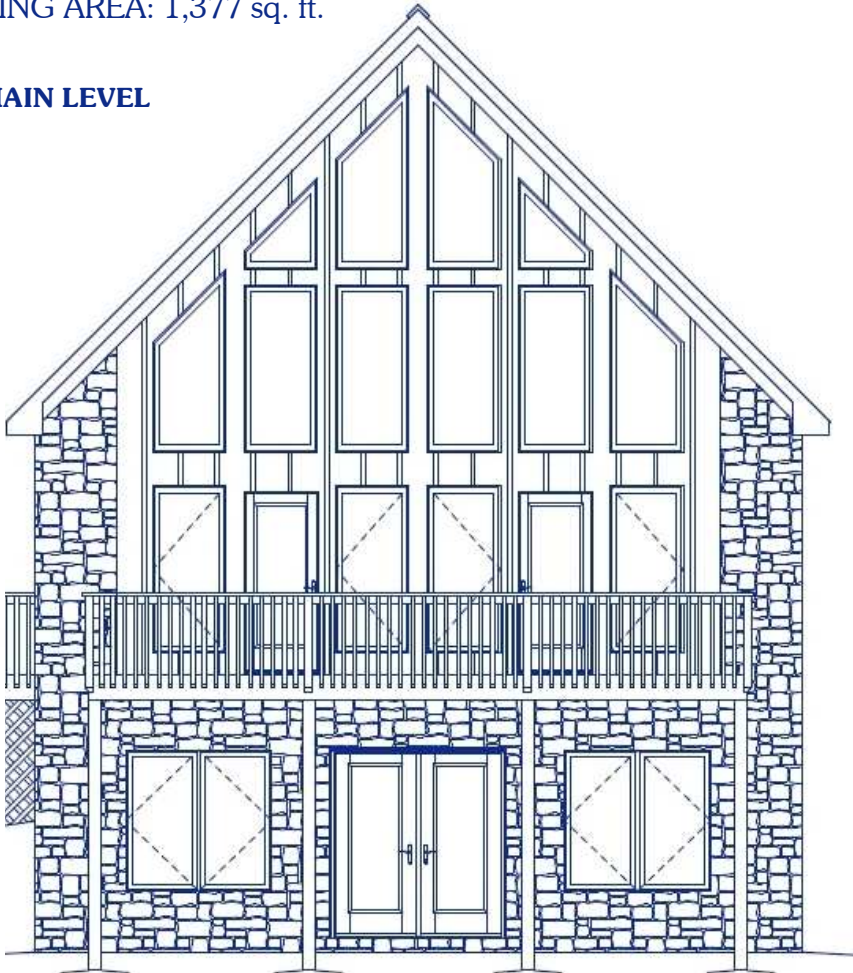
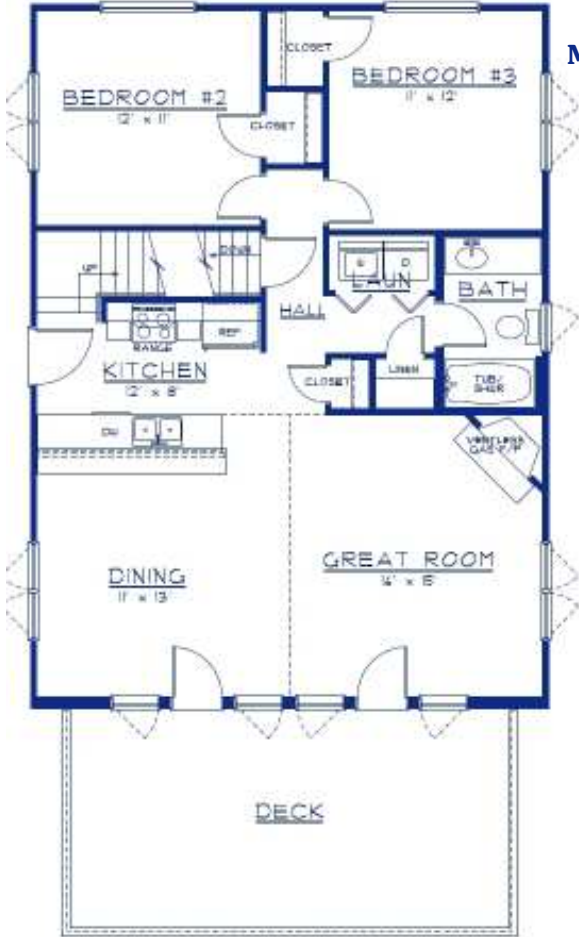


NEWEST TRUSSMARKS

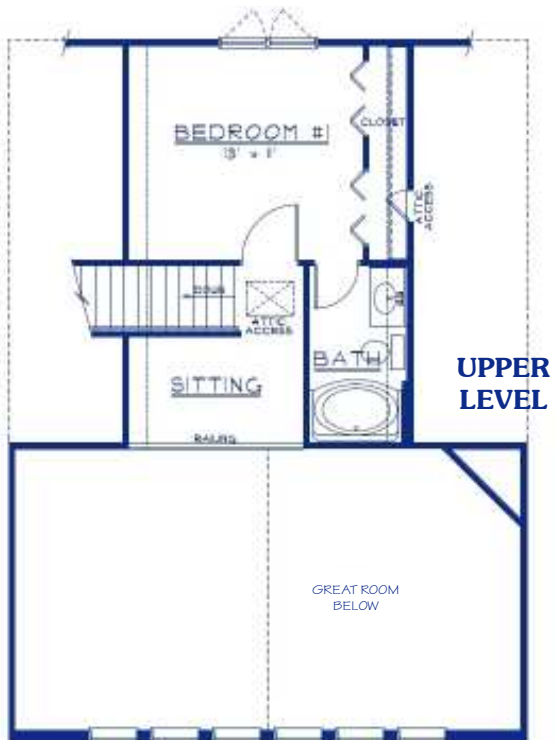
THE
SUNVIEW

PLAN #
1377

WIDTH: 28'-0" DEPTH: 38'-0" LIVING AREA: 1,377 sq. ft.



This small chalet is perfect at the lake, in the mountains, or anywhere the beauty of the outdoors needs to be felt indoors. Plan# 1377, The "Sunview", has 3 Bedrooms with the Master Bedroom being on the Upper Level. The Lower Level is available for finishing as needed.



PROPRIETARY INFORMATION:
The furnishing of this information does not convey any reproduction or construction rights. This brochure is provided as general information for choosing your new home. Refer to blueprints and specifications for accurate details. Timber Truss Housing Systems, Inc. reserves the right to introduce changes in plans and specifications without notification or obligation.
Timber Truss Housing Systems, Inc. 3-09

TrussMark Homes
by **TIMBER TRUSS HOUSING SYSTEMS, INC.**
P.O. Box 996 • 525 McClelland Street
Salem, Virginia 24153-0996
Phone **540/387-0273** • **800/766-9072**
Fax **540/389-0849** www.timbertruss.com