

THE BAYBERRY

PLAN #
1344
1345



PLAN 1344 / ELEVATION "A"

FLOOR PLANS OTHER SIDE

Timber Truss Housing Systems, Inc. has caused this TrussMark plan to be copyrighted by the United States Copyright Office, Library of Congress, Washington, D.C. Unauthorized use of the TrussMark plan, without the permission of Timber Truss Housing Systems, Inc., can lead to an award of damages, reimbursement of attorney's fees and costs, and the seizure or destruction of all infringements under Title 17, United States Code. Copyright law protection extends beyond exact duplication. An unauthorized use which is substantially similar to the plan is copyright infringement.

DUPLICATION OF EVERY DETAIL OR EXACT COPYING IS NOT NECESSARY TO ESTABLISH INFRINGEMENT OF THE COPYRIGHT. MAKING MINOR CHANGES IN THE HOUSE PLAN IS NOT AN AUTHORIZED USE UNDER THE COPYRIGHT LAW. INFRINGEMENT OF COPYRIGHT CAN EXIST EVEN WHERE ONLY A PART IS COPIED.

TrussMark Homes[®]
by **TIMBER TRUSS HOUSING SYSTEMS, INC.**

P.O. Box 996
Salem, Virginia 24153-0996

Phone **540/387-0273**

800/766-9072

Fax **540/389-0849**

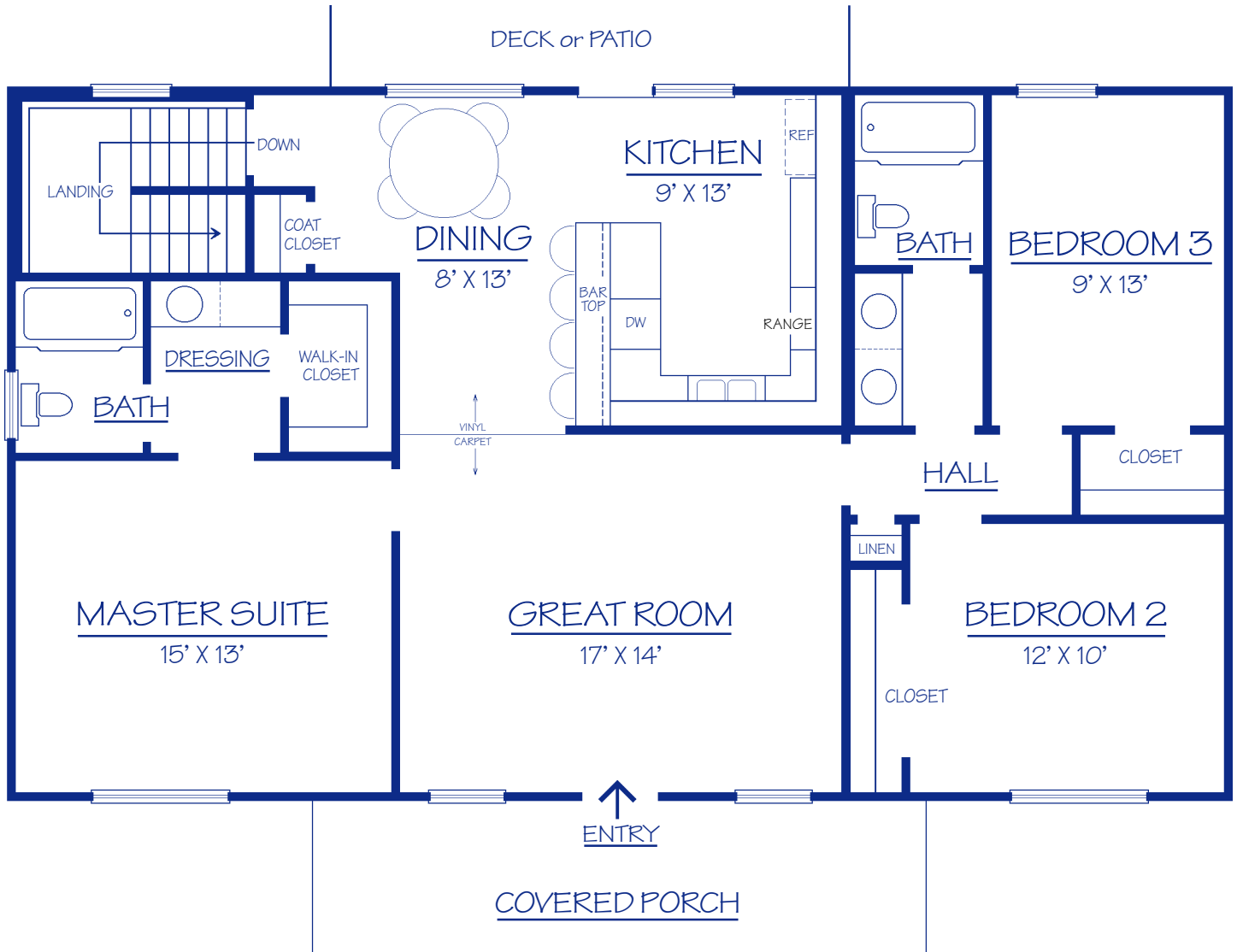
www.timbertruss.com

Located at: **525 McClelland Street**
(at 4th Street Bypass/Truck Route)

WIDTH: 48'-0" DEPTH: 28'-0" LIVING AREA: 1,344 sq. ft.

Plan# **1344** (FRAME)
1345 (BRICK)

This design, the "Bayberry" is a very attractive smaller plan. Features include a covered front porch, spacious Great Room, Kitchen with bar, dining area, and patio door to patio or deck. The Master Suite is separate from the two other bedrooms and has a well designed bath and dressing area with walk-in closet. This home design offers big features in a smaller home package.



Floor Plan

PROPRIETARY INFORMATION:

The furnishing of this information does not convey any reproduction or construction rights.

This brochure is provided as general information for choosing your new home. Refer to blueprints and specifications for accurate details. Timber Truss Housing Systems, Inc. reserves the right to introduce changes in plans and specifications without notification or obligation.

©TIMBER TRUSS HOUSING SYSTEMS, INC.

TrussMark Homes[®]
by TIMBER TRUSS HOUSING SYSTEMS, INC.
P.O. Box 996 • 525 McClelland Street
Salem, Virginia 24153-0996
Phone 540/387-0273 • Fax 540/389-0849
www.timbertruss.com