

THE SIERRA

PLAN #
1214



PLAN 1214 / ELEVATION "C"

FLOOR PLAN OTHER SIDE

Timber Truss Housing Systems, Inc. has caused this TrussMark plan to be copyrighted by the United States Copyright Office, Library of Congress, Washington, D.C. Unauthorized use of copyrighted TrussMark plans, without the permission of Timber Truss Housing Systems, Inc., can lead to an award of damages, reimbursement of attorney's fees and costs, and the seizure or destruction of all infringements under Title 17, United States Code. Copyright law protection extends beyond exact duplication. An unauthorized use which is substantially similar to the plan is copyright infringement.

DUPLICATION OF EVERY DETAIL OR EXACT COPYING IS NOT NECESSARY TO ESTABLISH INFRINGEMENT OF THE COPYRIGHT. MAKING MINOR CHANGES IN THE HOUSE PLAN IS NOT AN AUTHORIZED USE UNDER THE COPYRIGHT LAW. INFRINGEMENT OF COPYRIGHT CAN EXIST EVEN WHERE ONLY A PART IS COPIED.

TrussMark Homes[®]
by **TIMBER TRUSS HOUSING SYSTEMS, INC.**

P.O. Box 996
Salem, Virginia 24153-0996

Phone **540/387-0273**

800/766-9072

Fax **540/389-0849**

www.timbertruss.com

Located at: **525 McClelland Street**
(at 4th Street Bypass/Truck Route)

WIDTH: 46'-7" DEPTH: 32'-0" LIVING AREA: 1,214 sq. ft.

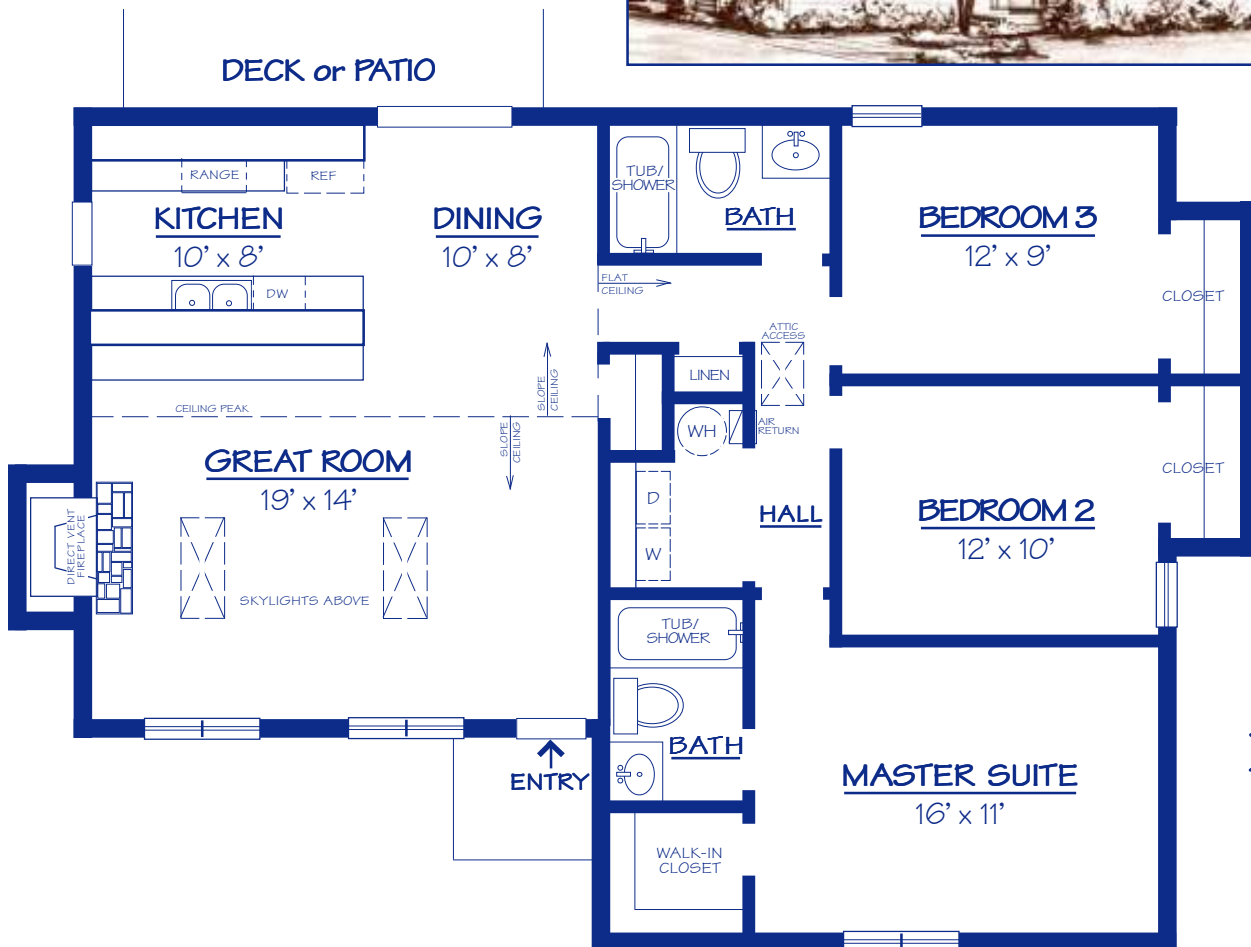
Plan# **1214**

Alternate Elevation "A"



The "Sierra" Plan 1214 is one of the most efficiently designed TrussMark Homes. Among the desirable features are: a bar separating the Kitchen and Great Room make a great entertaining feature, the vaulted ceiling with skylights and the cozy and energy efficient fireplace. The laundry area is conveniently located to the 3 Bedrooms which all have very adequate sized closets. Using 2x6 exterior walls would make this home well insulated and very energy efficient. Available in three unique elevations, the "Sierra" makes a smart choice for a small, efficient home.

Alternate Elevation "B"



Floor Plan

PROPRIETARY INFORMATION:

The furnishing of this information does not convey any reproduction or construction rights.

This brochure is provided as general information for choosing your new home. Refer to blueprints and specifications for accurate details. Timber Truss Housing Systems, Inc. reserves the right to introduce changes in plans and specifications without notification or obligation.

©Timber Truss Housing Systems, Inc.

TrussMark Homes[®]
 by **TIMBER TRUSS HOUSING SYSTEMS, INC.**
 P.O. Box 996 • 525 McClelland Street
 Salem, Virginia 24153-0996
 Phone **540/387-0273** • Fax **540/389-0849**
www.timbertruss.com