

THE

DANBURY

PLAN #
1172



PLAN 1172 / ELEVATION "A"

FLOOR PLANS OTHER SIDE

Timber Truss Housing Systems, Inc. has caused some TrussMark plans to be copyrighted by the United States Copyright Office, Library of Congress, Washington, D.C. Unauthorized use of copyrighted TrussMark plans, without the permission of Timber Truss Housing Systems, Inc., can lead to an award of damages, reimbursement of attorney's fees and costs, and the seizure or destruction of all infringements under Title 17, United States Code. Copyright law protection extends beyond exact duplication. An unauthorized use which is substantially similar to the plan is copyright infringement.

DUPLICATION OF EVERY DETAIL OR EXACT COPYING IS NOT NECESSARY TO ESTABLISH INFRINGEMENT OF THE COPYRIGHT. MAKING MINOR CHANGES IN THE HOUSE PLAN IS NOT AN AUTHORIZED USE UNDER THE COPYRIGHT LAW. INFRINGEMENT OF COPYRIGHT CAN EXIST EVEN WHERE ONLY A PART IS COPIED.

TrussMark Homes[®]
by **TIMBER TRUSS HOUSING SYSTEMS, INC.**

P.O. Box 996
Salem, Virginia 24153-0996

Phone **540/387-0273**

800/766-9072

Fax **540/389-0849**

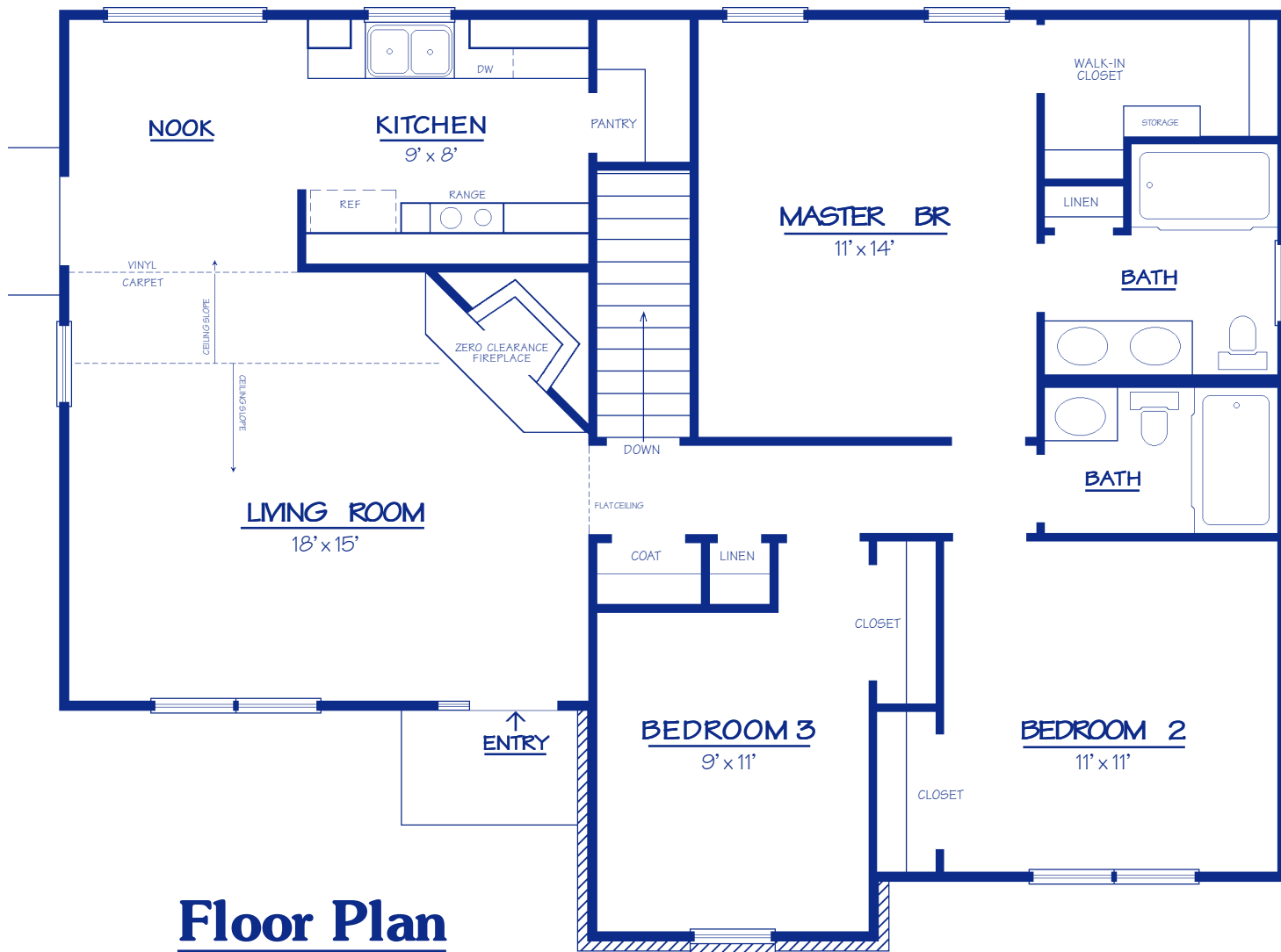
www.timbertruss.com

Located at: **525 McClelland Street**
(at 4th Street Bypass/Truck Route)

WIDTH: 42'-0" DEPTH: 32'-0" LIVING AREA: 1,172 sq. ft.

Plan# **1172**

This plan, the "Danbury", packs a lot of modern conveniences and features in a smaller 3 Bedroom ranch for one-floor living. The elevation design allows for an enhancement in exterior material as shown with the brick and vinyl siding. The spacious Great Room features a corner fireplace and sloped ceiling which also extends over the Kitchen and nook area. The Master Bedroom features a large walk-in closet, bath and dressing area. The "Danbury" is a small home with many big features.



Floor Plan

PROPRIETARY INFORMATION:

The furnishing of this information does not convey any reproduction or construction rights.

This brochure is provided as general information for choosing your new home. Refer to blueprints and specifications for accurate details. Timber Truss Housing Systems, Inc. reserves the right to introduce changes in plans and specifications without notification or obligation.

2/1mar06SP

TrussMark Homes[®]
by **TIMBER TRUSS HOUSING SYSTEMS, INC.**
P.O. Box 996 • 525 McClelland Street
Salem, Virginia 24153-0996
Phone **540/387-0273** • Fax **540/389-0849**
www.timbertruss.com