

NEWEST TRUSSMARKS

MULTI UNIT

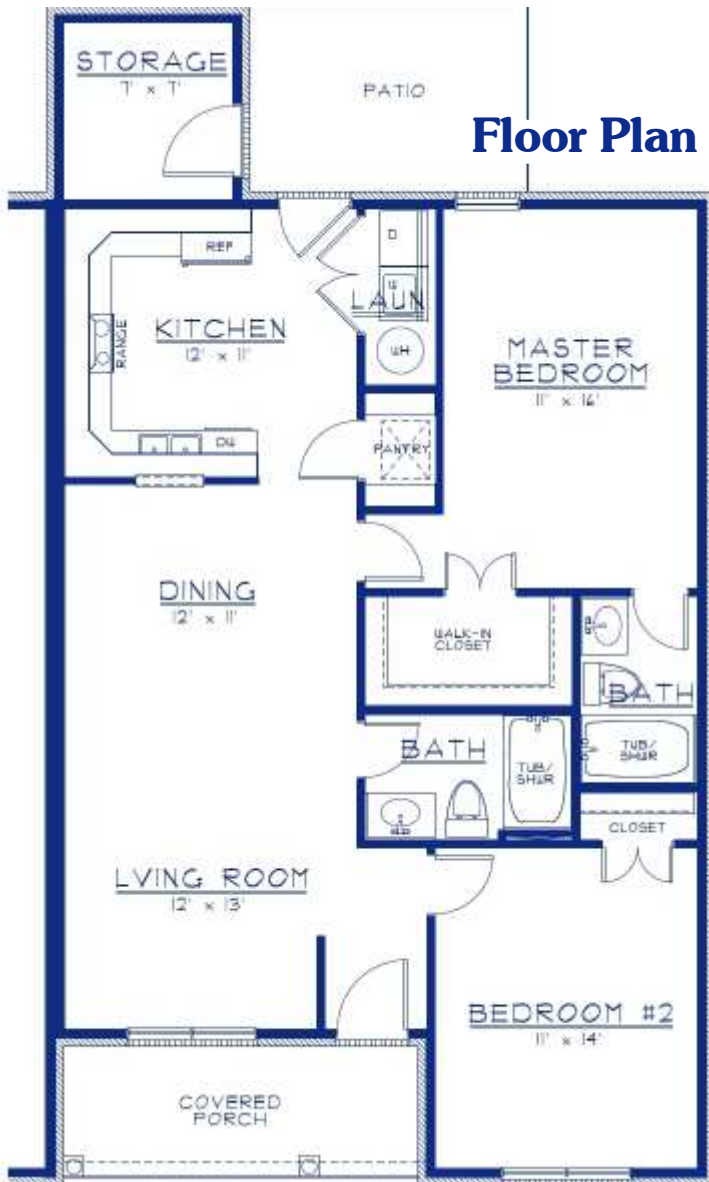
THE TREMONT

PLAN #
1144

WIDTH: 28'-0" DEPTH: 50'-0" LIVING AREA: 1,144 sq. ft.



PLAN 1144 / ELEVATION "A"



The "Tremont", Plan# 1144, is a well designed 2 Bedroom, 2 Bath, one level plan. It can easily be utilized as a multi unit plan or even as a single unit. It features an open Living and Dining Room area, convenient Kitchen with Laundry area and Pantry. A patio and a valuable storage room are found at the rear, just off the Kitchen. The large Master Bedroom includes a walk-in closet and private Bath. The Covered Porch is inviting but also provides privacy in this plan.

PROPRIETARY INFORMATION:

The furnishing of this information does not convey any reproduction or construction rights.

This brochure is provided as general information for choosing your new home. Refer to blueprints and specifications for accurate details. Timber Truss Housing Systems, Inc. reserves the right to introduce changes in plans and specifications without notification or obligation.

Timber Truss Housing Systems, Inc.

3-09

TrussMark Homes[®]
 by **TIMBER TRUSS HOUSING SYSTEMS, INC.**
 P.O. Box 996 • 525 McClelland Street
 Salem, Virginia 24153-0996
 Phone **540/387-0273** • **800/766-9072**
 Fax **540/389-0849** www.timbertruss.com