

THE

LAKEVIEW

PLAN #

1136



PLAN 1136 / ELEVATION "A"

FLOOR PLAN OTHER SIDE

Timber Truss Housing Systems, Inc. has caused this TrussMark plan to be copyrighted by the United States Copyright Office, Library of Congress, Washington, D.C. Unauthorized use of copyrighted TrussMark plans, without the permission of Timber Truss Housing Systems, Inc., can lead to an award of damages, reimbursement of attorney's fees and costs, and the seizure or destruction of all infringements under Title 17, United States Code. Copyright law protection extends beyond exact duplication. An unauthorized use which is substantially similar to the plan is copyright infringement.

DUPLICATION OF EVERY DETAIL OR EXACT COPYING IS NOT NECESSARY TO ESTABLISH INFRINGEMENT OF THE COPYRIGHT. MAKING MINOR CHANGES IN THE HOUSE PLAN IS NOT AN AUTHORIZED USE UNDER THE COPYRIGHT LAW. INFRINGEMENT OF COPYRIGHT CAN EXIST EVEN WHERE ONLY A PART IS COPIED.

TrussMark Homes[®]
by **TIMBER TRUSS HOUSING SYSTEMS, INC.**

P.O. Box 996
Salem, Virginia 24153-0996

Phone **540/387-0273**

800/766-9072

Fax **540/389-0849**

www.timbertruss.com

Located at: **525 McClelland Street**
(at 4th Street Bypass/Truck Route)

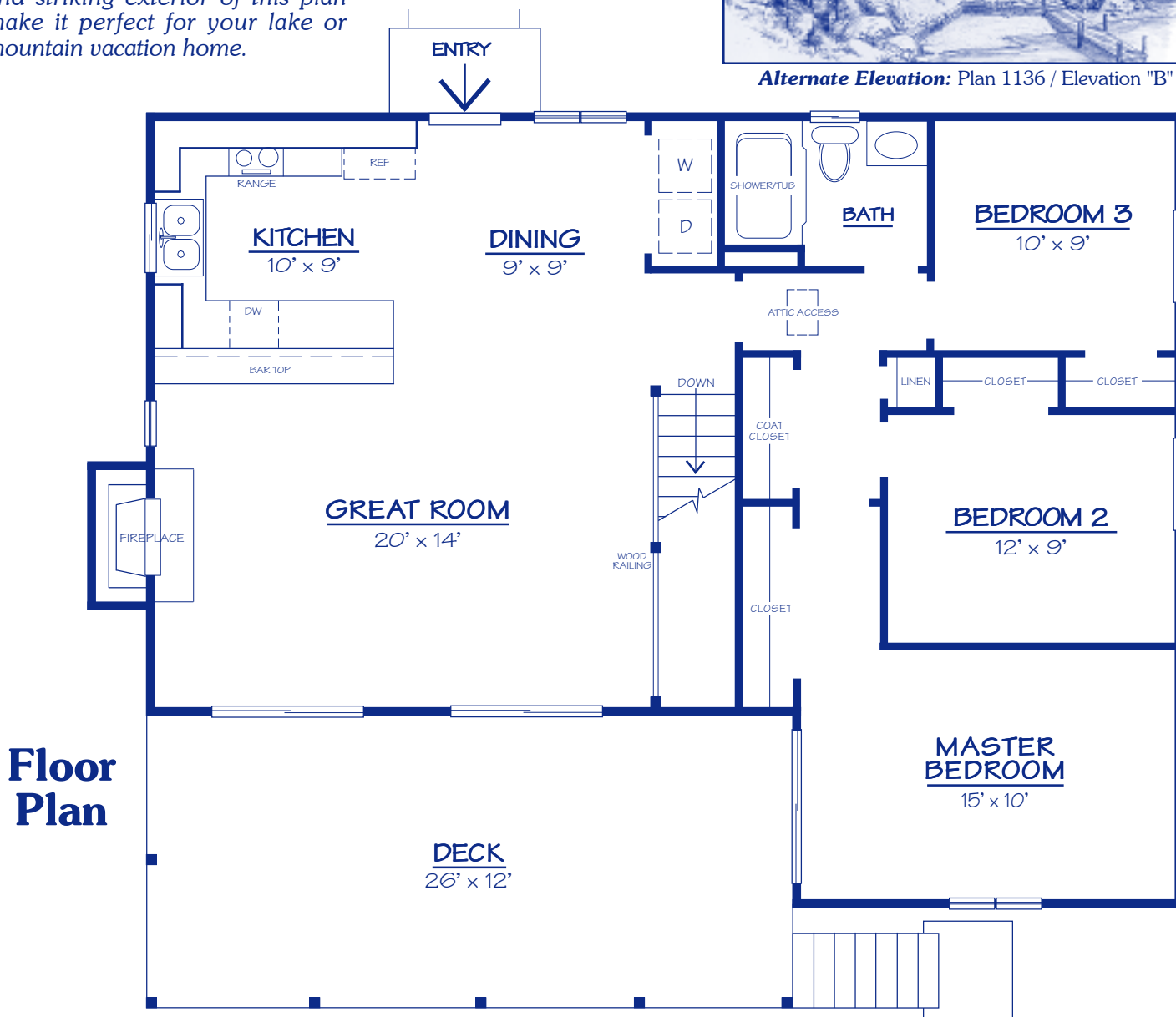
WIDTH: 42'-0" DEPTH: 32'-0" LIVING AREA: 1,136 sq. ft.

Plan# **1136**

The "Lakeview", Plan# 1136 is large enough for year-round living yet small enough for weekends at the lake. This home was specifically designed with local desires in a lake home. The large Great Room, adjoining Kitchen and Dining Room, promote comfortable and informal "lake living". Entertaining guests is a pleasure with the openness and flow to the huge outside deck. The vaulted ceiling further adds to the openness of this home. If built with a basement, expansion for added living space would be very simple. The features and striking exterior of this plan make it perfect for your lake or mountain vacation home.



Alternate Elevation: Plan 1136 / Elevation "B"



Floor Plan

PROPRIETARY INFORMATION:

The furnishing of this information does not convey any reproduction or construction rights.

This brochure is provided as general information for choosing your new home. Refer to blueprints and specifications for accurate details. Timber Truss Housing Systems, Inc. reserves the right to introduce changes in plans and specifications without notification or obligation.

©1984 Timber Truss Housing Systems, Inc.

2/Mmr08SP

TrussMark Homes[®]
by **TIMBER TRUSS HOUSING SYSTEMS, INC.**
P.O. Box 996
Salem, Virginia 24153-0996
Phone **540/387-0273** • Fax **540/389-0849**
www.timbertruss.com