

THE BRADFORD

PLAN #
1090



PLAN 1090 / ELEVATION "A"

FLOOR PLANS OTHER SIDE

Timber Truss Housing Systems, Inc. has caused this TrussMark plan to be copyrighted by the United States Copyright Office, Library of Congress, Washington, D.C. Unauthorized use of copyrighted TrussMark plans, without the permission of Timber Truss Housing Systems, Inc., can lead to an award of damages, reimbursement of attorney's fees and costs, and the seizure or destruction of all infringements under Title 17, United States Code. Copyright law protection extends beyond exact duplication. An unauthorized use which is substantially similar to the plan is copyright infringement.

DUPLICATION OF EVERY DETAIL OR EXACT COPYING IS NOT NECESSARY TO ESTABLISH INFRINGEMENT OF THE COPYRIGHT. MAKING MINOR CHANGES IN THE HOUSE PLAN IS NOT AN AUTHORIZED USE UNDER THE COPYRIGHT LAW. INFRINGEMENT OF COPYRIGHT CAN EXIST EVEN WHERE ONLY A PART IS COPIED.

TrussMark Homes[®]
by **TIMBER TRUSS HOUSING SYSTEMS, INC.**

P.O. Box 996
Salem, Virginia 24153-0996

Phone **540/387-0273**

800/766-9072

Fax **540/389-0849**

www.timbertruss.com

Located at: **525 McClelland Street**
(at 4th Street Bypass/Truck Route)

WIDTH: 42'-0" DEPTH: 26'-0" LIVING AREA: 1,092 sq. ft.*

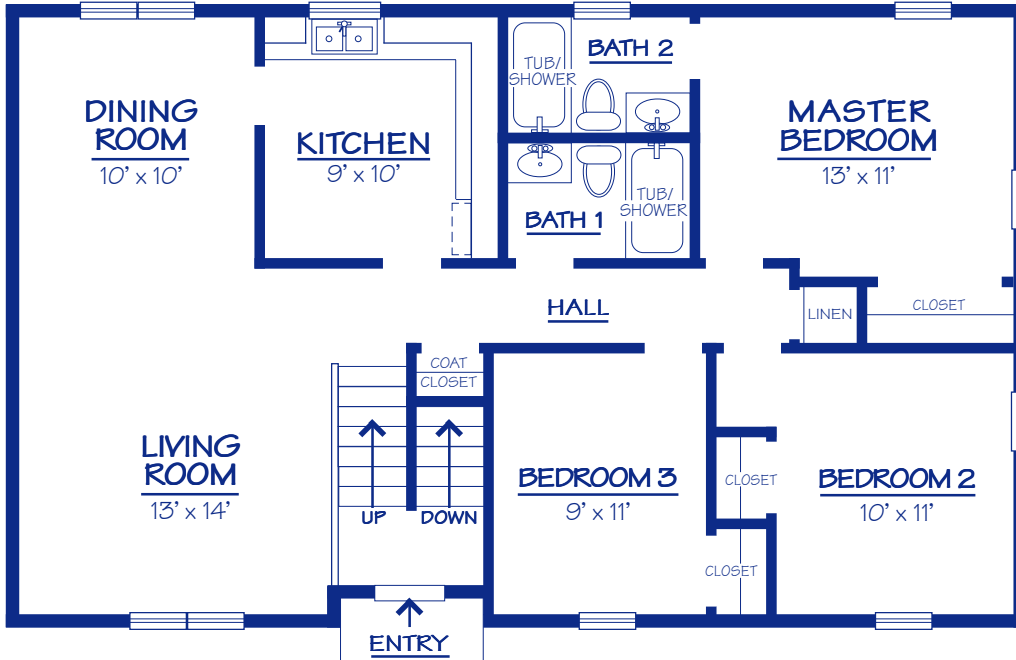
Plan# **1090**

*Upper Level only

The "Bradford" is a good choice for the established family needing extra living area. Notice the large Family Room with space for a future bar, and the extra large hobby room on the lower level. The use of floor trusses makes the Family Room free from support columns and bearing walls. The lower level also can be left entirely open as a basement, to lower initial construction costs.



Alternate Elevation "B"



- Square footage figure (1,092) refers to Upper Level only.
- Upper Level has 3 Bedrooms and 2 Baths.
- Alternate plans are available for Lower Level.

UPPER LEVEL Floor Plan



LOWER LEVEL Floor Plan

PROPRIETARY INFORMATION:

The furnishing of this information does not convey any reproduction or construction rights.

This brochure is provided as general information for choosing your new home. Refer to blueprints and specifications for accurate details. Timber Truss Housing Systems, Inc. reserves the right to introduce changes in plans and specifications without notification or obligation.

©Timber Truss Housing Systems, Inc.

TrussMark Homes
 by **TIMBER TRUSS HOUSING SYSTEMS, INC.**
 P.O. Box 996 • 525 McClelland Street
 Salem, Virginia 24153-0996
 Phone **540/387-0273** • Fax **540/389-0849**
www.timbertruss.com