

NEWEST TRUSSMARKS

THE ESCAPE

PLAN #
440

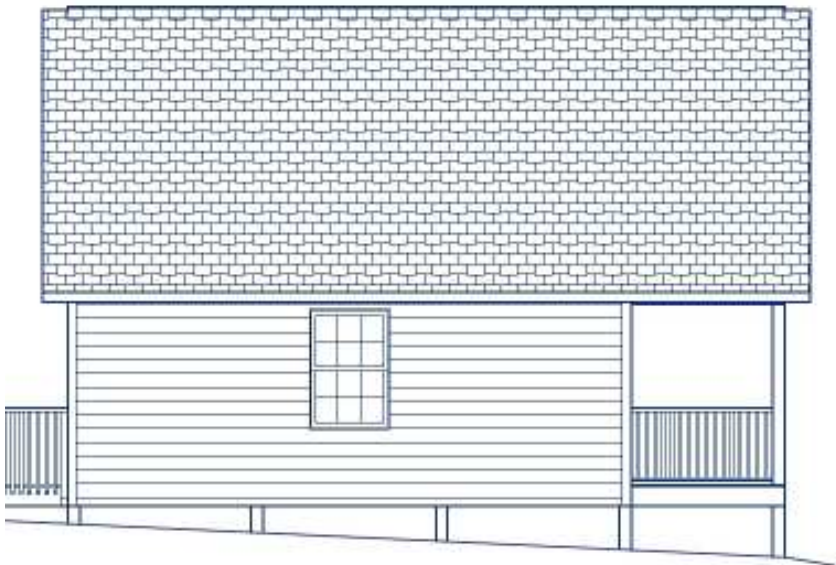
WIDTH: 20'-0" DEPTH: 28'-0" LIVING AREA: 440 sq. ft.



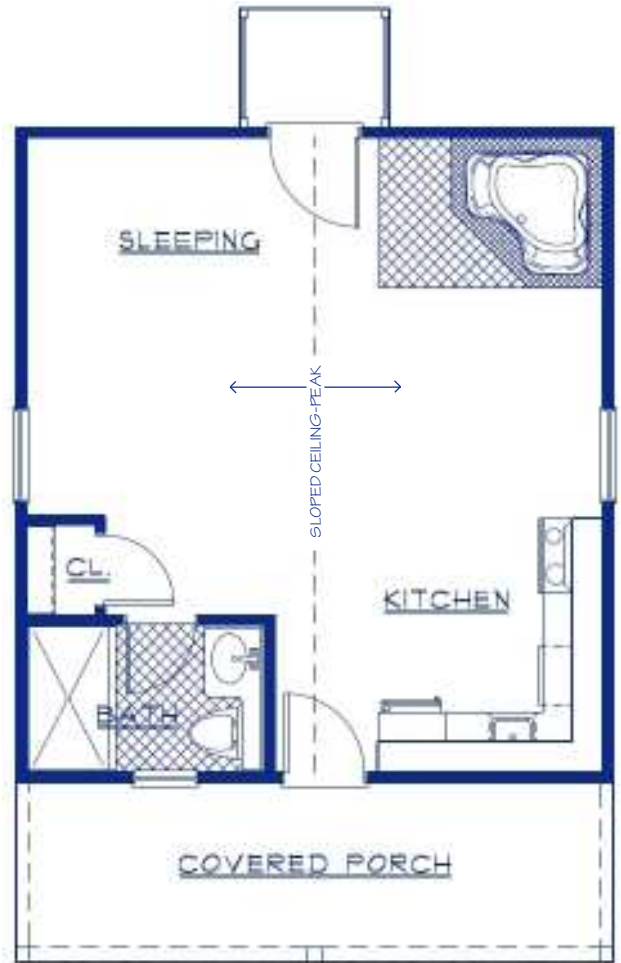
PLAN 440 / ELEVATION "A"

As the name of this plan implies, it makes a great little getaway weekend home, cabin, chalet or whatever you desire. That depends on how you finish it and what you want to call it. An "Escape" seems pretty appropriate in our opinion.

Plan# 440 is a simple and basic plan that can be built as shown, or modified for your particular needs and desires.



Side Elevation



Floor Plan

PROPRIETARY INFORMATION:

The furnishing of this information does not convey any reproduction or construction rights.

This brochure is provided as general information for choosing your new home. Refer to blueprints and specifications for accurate details. Timber Truss Housing Systems, Inc. reserves the right to introduce changes in plans and specifications without notification or obligation.

Timber Truss Housing Systems, Inc.

3-09

TrussMark Homes[®]
by **TIMBER TRUSS HOUSING SYSTEMS, INC.**
P.O. Box 996 • 525 McClelland Street
Salem, Virginia 24153-0996
Phone **540/387-0273** • **800/766-9072**
Fax **540/389-0849** www.timbertruss.com